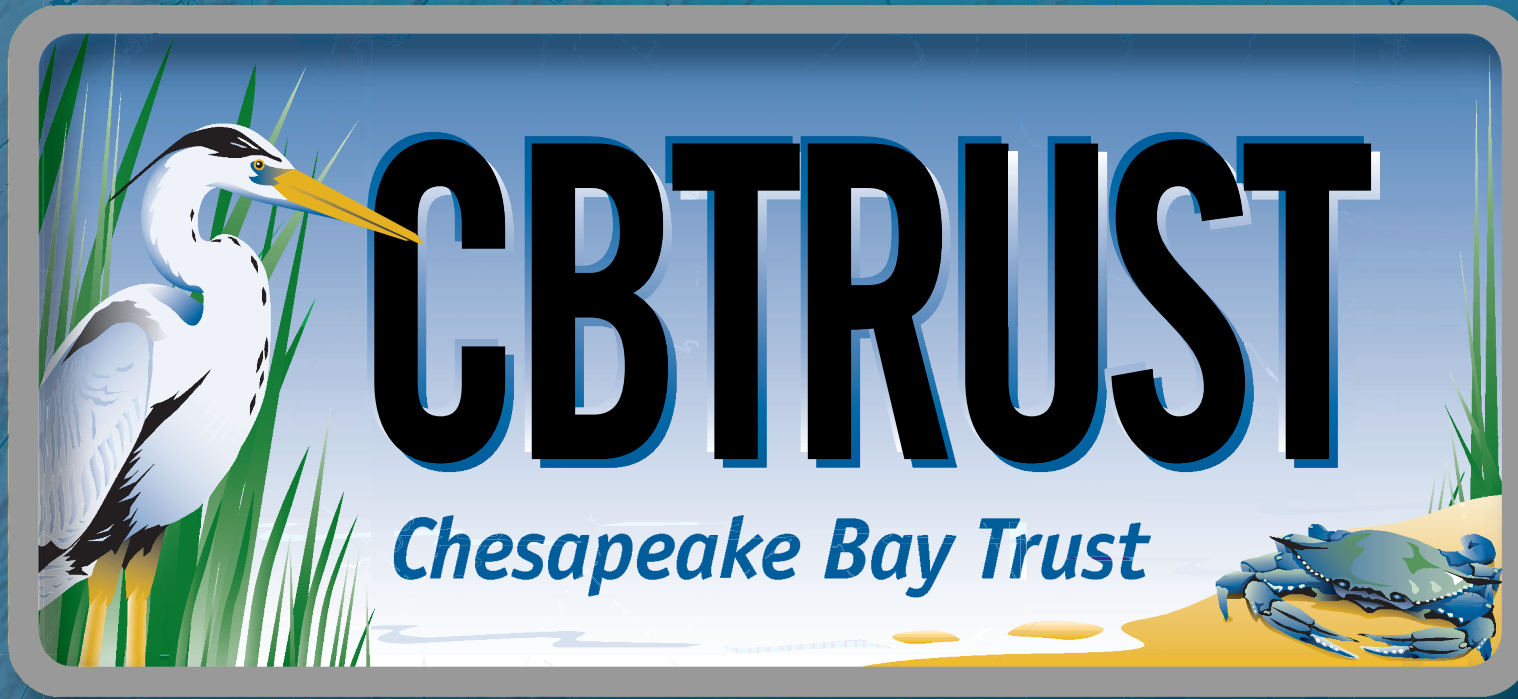


# 2012-2013 Chesapeake Bay Trust Annual Report



Chesapeake Bay

Working to Improve our Communities and Restore our Waters through Hands-on Projects and Programs





# In 2013, Chesapeake Bay Trust grantees:



**STUDENTS:** Engaged 59,547 students in outdoor learning experiences.

59,547



8 acres

**STORMWATER:**

Created more than 8 acres of rain gardens and distributed 429 rain barrels.



**TEACHERS:**

4,643 teachers taught students about their environment and the Chesapeake Bay.







# CBTRUST

*Chesapeake Bay Trust*



## HABITAT:

Restored 87 acres of streamside buffers and precious wetlands.

## SHORELINE:

Created **4,595** linear feet of living shoreline.



## VOLUNTEERS:

Engaged **24,575** individuals who volunteered **26,303** hours to clean up local neighborhoods, the Bay and its rivers.

**TRASH:** Removed **25 tons** of trash and **3 acres** of invasive species from area streams and rivers.

## PLANTS:

Planted 89,517 native trees, plants and marsh grasses.

89,517



# WHO WE ARE | About the Chesapeake Bay Trust

**\$55 million  
in Grants**



The Chesapeake Bay Trust is a nonprofit, grant-making organization dedicated to improving the Chesapeake Bay and its tributaries through environmental education, community outreach, and local watershed restoration. Since 1985, the Trust has awarded more than

\$55 million in grants and projects and engaged hundreds of thousands of dedicated individuals in projects and programs that are making a difference for the streams, rivers, and other natural resources of Maryland and the Chesapeake watershed.

## Year in Review Message



*Jana Davis, Ph.D.*

Dear Friends of the Chesapeake Bay Trust,

Once again we end the year with tremendous respect for how hard our grantees work to accomplish their goals to preserve and

protect the natural resources of our watersheds. In 2013, the Trust and our grantee partners distributed \$5.3 million to our communities through 322 on-the-ground projects and programs that help restore our waterways and educate local citizens. This year alone Trust grantees educated almost 60,000 students and engaged tens of thousands of volunteers. They installed hundreds of rain gardens, rain barrels, stormwater projects, green streets, living shorelines, and other water quality and habitat-improving projects in the ground. Our job at the Chesapeake

Bay Trust is to supply the tools and resources our grantees need to be successful, and we applaud their work.

Each of our supporters has helped us to responsibly, efficiently, and carefully manage the resources needed to make these projects possible. You have supported us through the Maryland General Assembly's Treasure the Chesapeake license plate program and the Bay Fund income tax check-off program. You have donated other funds and resources. You have helped us leverage these dollars, through the power of the sheer number of participants. For example, today more than 400,000 Marylanders proudly display Bay plates on their cars. These funds are leveraged with contributions from government, corporations, and other private partners, who have increasingly supported programs at the Trust that accomplish common goals. The Trust has long been a well-respected fiscal partner, turning these funding sources into measurable

accomplishments on the ground. We help applicants navigate the grant process and send all requests through a rigorous review process to maximize project success.

These projects are making a difference. New milestones are within reach, it seems to many in our community, to make significant progress toward rivers, streams, and bays that are swimmable and fishable, usable by this generation and generations to come. Progress is demonstrated by the number of our neighbors who care about natural resources: Five times as many citizens, for example, say they care about the bay and our state's natural resources than those who do not.

Progress is demonstrated by the availability of resources, knowledge, and information needed to make visible improvements: Many feel we are turning a corner. Progress is demonstrated by the number of young people who are engaged in the effort, and are aware of how their actions connect to their natural resources. As a result, Maryland has

passed, and other states are considering, high school environmental literacy graduation requirements to better educate young people about their natural world.

The Trust is proud to play a role in the effort to restore and protect the local streams, rivers, forests, parks, and other resources of the Chesapeake Bay, Maryland's Atlantic Coastal Bays, and Youghiogheny watersheds. And we are proud to present this year's Annual Report that will serve as an overview of our grant programs and special initiatives. We thank our grantees, our project partners, our funding partners, and everyone who continues to support the Trust in many ways.

Sincerely,

Jana Davis, Ph.D.  
Executive Director  
Chesapeake Bay Trust



## Board of Trustees

W. Warren Hamel, Esq.  
Venable, LLP  
*Chair of the Board of Trustees*

Honorable John Astle  
Maryland State Senate

Torrey C. Brown, M.D.  
Maryland State Delegate, retired

Stuart A. Clarke  
Town Creek Foundation

Honorable Valerie Ervin  
Montgomery County Council

J. Matthew Gambrill, Esq.  
Calvert Marina

Joseph Gill  
Maryland Department of Natural  
Resources

F. Carter Heim, CPA  
HeimLantz

Virginia Kearney  
Maryland Department of the  
Environment

Louise Lawrence  
Maryland Department of Agriculture

Steve Linhard  
Chesapeake Medical Imaging

Honorable Adam Ortiz  
Prince George's County Department  
of Environmental Resources

Dr. Margaret Palmer  
National Socio-Environmental  
Synthesis Center

John Quinn  
Exelon Corporation

Honorable Shane Robinson  
Maryland House of Delegates

Tara Potter  
Anchoring Point, LLC

Terence Smith  
Journalist, retired

Scot T. Spencer  
The Annie E. Casey Foundation

Benjamin Wechsler  
Linowes and Blocher LLP

### *Emeritus Trustees*

Governor Harry R. Hughes  
Martin H. Poretsky

## Staff

*Executive Office*  
Jana Davis, Ph.D.  
*Executive Director*

### *Finance and Administration*

- Steve Russo  
*Director of Finance and  
Administration*
- Heather Adams  
*Office Manager*

### *Grant Managers and Technical Assistance*

- Jamie Baxter  
*Program Director*
- Kacey Wetzel  
*Senior Program Officer*
- Jen Wijetunga  
*Senior Program Officer*
- Tara Baker  
*Program Officer*
- Hieu Truong  
*Program Officer*



### *Communications and Development*

- Molly Alton Mullins  
*Director of Communications  
and Development*
- Kristin Foringer  
*Communications and Development  
Manager*

## Trust Volunteers

Throughout the year many talented and knowledgeable individuals have lent their expertise to the Trust and also volunteered for many events. For this we are truly thankful for their assistance.

Abby Grebasch  
Abby Hancock  
Akiima Price  
Amanda Bassow  
Amanda Pinzon  
Amanda Rockler  
Amy Owsley  
Anita Kraemer  
Ashley Hibshman  
Audrey DeGregorio  
Bart Merrick  
Bhaskar Subramanian  
Brenda Barger  
Brent McCloskey  
Britt Slattery  
Bryan Levy  
Bryan Seipp  
Carmela Thomas  
Carol Wong  
Carole Barth  
Charles Henney  
Chris Connor  
Chris Maex  
Chris Pupke  
Christine Robertson  
Cindy Wei  
Colleen Zarek  
Dan Baker

Daphne Pee  
David Hwang  
Debbie Wetzel  
Denise Rigney  
Donna Olszewski  
Doyle Niemann  
Dr. Maria Elena Figueroa  
Elena Takaki  
Elle O'Brien  
Erin Ling  
Erin McArdle  
Erin McLaughlin  
Fabiana Martins  
Gary Hedges  
George Saliba  
Greg Baker  
Heather Jentilet  
J. Morgan Grove  
Jake Reilly  
Jamie Bauer  
Jeannelle Wallace  
Jeff Blass  
Jenn Hicks  
Jenn McDonald  
Jennifer Carr  
Jennifer Raulin  
Jerry Mullins  
Joe Arrowsmith

Joe Starinchak  
Josh Thompson  
Julie Ayers  
Julie Winters  
Justin Haynes  
Kanishka Wijetunga  
Karen Scott  
Kate Boicourt  
Katherine Klausmeier  
Kathleen Register  
Katy Phelps  
Kelsey Hallowell  
Kenneth Hendrickson  
Kevin Schabow  
Kevin Smith  
Kristin Lasker  
Larissa Graham  
Laura Collard  
Laura Connelly  
Laura Eddy  
Lauren Leahy  
Lee Ann Hutchison  
Liana Pipitone  
Lindsay Eney  
Lisa Clark  
Marcus Griswold  
Marian Honeczky  
Markesa Oliver

Mary Andrews  
Mary Foringer  
Maureen Eccleston  
Meghan Kelly  
Michael Raupp  
Mike Laguna  
Paul Foringer  
Rich Lefebure  
Rich Takacs  
Rick Ayella  
Sarah Boynton  
Sarah Haines  
Sarah Weamert  
Sean McGuire  
Shannon Sprague  
Sharon Sproles  
Sophie Foscue  
Stacy Bond  
Stef Frenzl  
Stephen Reiling  
Susan McDowell  
Teresa Crane  
Timothy Edgar, Ph.D.  
Vicky Carrasco  
W. Douglas Evans, Ph.D.  
Wink Hastings

# WHAT WE DO



**Allegany: \$39,163**  
**Anne Arundel: \$482,950**  
**Baltimore City: \$523,941**  
**Baltimore: \$131,144**  
**Calvert: \$22,580**  
**Caroline: \$53,634**

**Carroll: \$53,985**  
**Cecil: \$262,344**  
**Charles: \$24,278**  
**Dorchester: \$146,523**  
**Frederick: \$42,145**  
**Garrett: \$64,473**

**Harford: \$1,389**  
**Howard: \$72,791**  
**Kent: \$101,875**  
**Montgomery: \$201,554**  
**Prince George's: \$245,900**  
**Queen Anne's: \$83,018**

**St. Mary's: \$50,000**  
**Talbot: \$152,296**  
**Washington: \$95,806**  
**Wicomico: \$66,857**  
**Worcester: \$62,700**





## WHAT WE DO

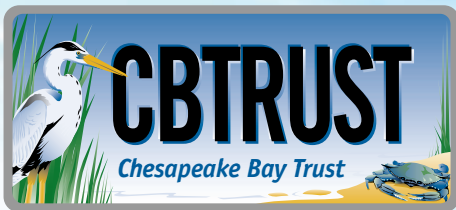


Pennsylvania: \$130,100  
Virginia: \$572,352  
West Virginia: \$47,989  
Delaware: \$20,000  
Washington, DC: \$161,294

**Watershed-wide:  
\$1,390,040**



# Grant Programs



**Mini Grant Program:**  
159 projects awarded  
for \$505,693  
in grants

**Outreach and  
Community  
Engagement Grant  
Program:**

17 projects awarded  
for \$342,316 in  
grants

Through its Outreach and Community Engagement Grant Program, the Trust seeks to engage individuals in practices and projects that benefit the Chesapeake Bay, its rivers, and local communities. In addition to raising awareness and increasing citizen participation, this grant program also funds efforts that seek to modify individual and community behaviors.

## EDUCATION:

Advancing environmental education through classroom learning, outdoor experiences, and green school development.

## RESTORATION:

Implementing restoration projects that reduce pollution, restore habitat, and improve water quality.

## COMMUNITY OUTREACH:

Engaging individuals in grass-roots efforts that improve the health of waterways and local communities.

The Trust's Mini Grant Program awards grants up to \$5,000 to schools and nonprofit organizations to advance environmental education, outreach and restoration projects that benefit local communities and the Chesapeake Bay. This grant program is an excellent program for first-time applicants. In FY13, the Trust was also proud to provide resources for applicants participating in the Governor's Day to Serve program promoting volunteerism and healthy waters.



**Green Streets, Green  
Jobs, Green Towns  
Grant Program:**

7 projects awarded for  
\$400,000 in grants

The Green Streets, Green Jobs, Green Towns Grant Program is made possible through a partnership with the Chesapeake Bay Trust, U.S. Environmental Protection Agency Region 3, Maryland Department of the Environment, and Maryland Department of Natural Resources. This collaborative effort seeks to reduce stormwater runoff by using green infrastructure practices that increase tree canopy, capture and filter rainwater, and improve watershed protection, community livability, and economic vitality.







## Environmental Education Grant Program:

**15 projects awarded for \$425,000 in grants**

The Trust's Environmental Education Grant Program is designed to engage students in classroom and field-based activities that increase stewardship of local rivers, streams and the Chesapeake Bay. The program awards funding to expand K-12 environmental education programs and increase student access to outdoor learning experiences in an effort to increase environmental literacy throughout the Chesapeake Bay region.



## Restoration Grant Program:

**20 projects awarded for \$458,604 in grants**

The Trust's Restoration Grant Program provides funds to organizations and agencies for demonstration-scale, community-based, on-the-ground restoration projects. Through this program, the Trust seeks to fund projects that result in improved watershed health that also engages the public in restoration activities.



## Grant Programs

## Living Shorelines Grant Program:

**14 projects awarded for \$726,001 in grants**

The Trust's Living Shorelines Grant Program, in partnership with the Maryland Department of the Environment, the National Oceanic and Atmospheric Administration, and the Maryland Department of Natural Resources, seeks to create and promote living shorelines in Maryland. This grant initiative is designed to encourage the creation of living shoreline restoration projects and enhancing public awareness about the benefits of living shorelines.



## Watershed Assistance Grant Program:

**15 projects awarded for \$415,986 in grants**

The Watershed Assistance Grant Program supports watershed planning and the design of watershed restoration and protection projects. In partnership with the Maryland Department of Natural Resources, this program provides funding for planning and design assistance for projects that lead to improved water quality in the Maryland portion of the Chesapeake Bay watershed and the Maryland Coastal Bays.





# Grant Programs

## Community Greening Grant Program: 7 projects awarded for \$179,221 in grants

The Community Greening Grant Program awards funds to help communities implement greening plans that increase forest canopy, reduce stormwater runoff, improve air quality, and enhance the quality of life in urban areas. The program awards grants to local governments, non-profit organizations, and neighborhood associations for on-the-ground restoration and other activities that “green” local communities in Maryland.



## Anne Arundel County Community Tree Planting Mini Grant:

7 grants awarded for \$6,181 in funding



The Chesapeake Bay Trust partnered with the Anne Arundel County Forest Conservancy District Board to provide small grants to help communities and organizations increase the number of trees and tree canopy in neighborhoods, parks, and communities throughout Anne Arundel County.



## Capacity Building Initiative:

22 grants awarded for \$671,000 in funding

The Capacity Building Initiative is a three year program that provides assistance to organizations in the form of grants, technical assistance, and training to enhance the effectiveness of targeted watershed organizations by increasing their power to advance local watershed protection priorities through collaborative strategies.



**T**he Chesapeake Bay Trust is covered frequently by the news media for its grantmaking efforts, technical expertise and special initiatives.

In 2013, the Chesapeake Bay Trust was mentioned more than 400 times by print and online media which resulted in over 66 million media impressions. In addition, the Chesapeake Bay Trust was covered more than 100 times on radio and by television news outlets for its many partnerships and restoration efforts.

Every year the Trust also attends approximately 50 grantee and partner events at which we are recognized for our valued contributions to community outreach and local watershed restoration.



## Living Shorelines Grant Program

On August 30, 2012, the Chesapeake Bay Trust held a press conference to announce the latest developments of its Living Shorelines Grant Program. Maryland Lt. Governor Anthony Brown, Maryland Department of the Environment Secretary Robert Summers, Maryland Department of Natural Resources Secretary John Griffin, and Acting Assistant Secretary for the National Oceanic and Atmospheric Administration's Eric Schwaab all attended the event.



## Green Streets, Green Jobs, Green Towns Grant Initiative

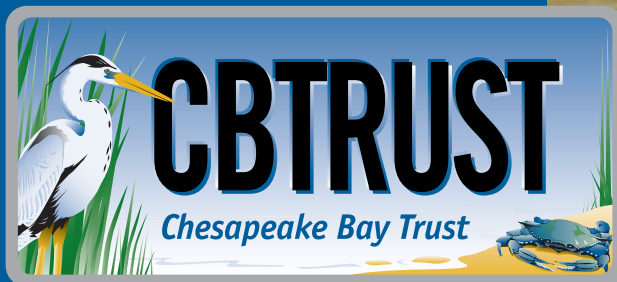
The Trust and the U.S. Environmental Protection Agency announced funding to seven municipalities and nonprofit organizations for projects that reduce stormwater runoff through the Green Streets, Green Jobs, Green Towns partnership. The announcement, made at Dunbar High School, was attended by Washington, D.C. Mayor Vincent Gray and EPA Regional Administrator Shawn Garvin, among other project partners.



## Chesapeake Conservation Corps

In August 2012, the Trust announced the third class of its Chesapeake Conservation Corps job training program. This event provided an opportunity for all new Corps participants to get energized about their upcoming year of service. Congressman John Sarbanes, Maryland Senate President Thomas V. "Mike" Miller, Jr., and Senator John Astle, among many others, were on hand to meet with the Corps and provide additional information on the program's creation and recent successes.

# HOW WE ARE FUNDED



The Chesapeake Bay Trust is funded through many different sources including purchases of the Maryland Treasure the Chesapeake license plate, donations to the Bay Fund on the Maryland state income tax form, donations from individuals and corporations, and partnerships with private foundations and federal and state agencies. Ninety cents of every dollar the Chesapeake Bay Trust receives is dedicated to its educational programs, outreach efforts and restoration projects.



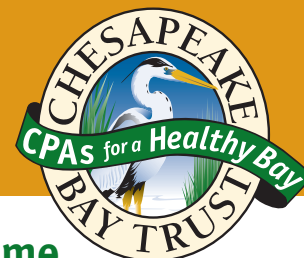
## 11th Straight Year!

For the 11<sup>th</sup> year in a row, the Chesapeake Bay Trust has received a 4-Star rating from Charity Navigator, the largest evaluator of charities in the U.S. This ranking places the organization in the top 1 percent of charities nationwide, for its sound fiscal management and commitment to accountability and transparency.



## Show Us Your Plate

During the summer of 2013, the Trust hosted a contest to encourage Marylanders to send in photos of their Bay plate taken at fun and interesting locations. Almost 200 photos and votes were submitted with the photo recreating the iconic characters of the Andy Griffith Show as the favorite!



## Help the Chesapeake Bay at Tax Time



Last year almost \$1 million was contributed through the Chesapeake Bay and Endangered Species Fund, a voluntary program that allows Marylanders to make donations to help the Chesapeake Bay when they file their state income taxes. In 2013, almost 34,000 tax returns had donations allocated for the Bay Fund, averaging \$30 per donation. This fund, which is split evenly between the Chesapeake Bay Trust and the Maryland Department of Natural Resources, allows Marylanders to help restore the Bay and conserve Maryland's native wildlife and endangered species easily at tax time. Donations of any amount can be made, and all are tax deductible the following year.

In an effort to educate more Marylanders about the Bay Fund, more than 40 tax professionals have joined the Trust's CPAs for a Healthy Bay program. Special thanks to all who participated in 2013, and the Trust hopes to expand this program to reach more Marylanders next year.





## Maryland's Bay Plate: Making Our Communities Better

At the very heart of the Chesapeake Bay Trust is the Maryland Bay plate. This iconic Chesapeake Bay symbol was purchased by more than 45,000 Marylanders this past year who wanted to showcase their support of our most treasured natural resource. The plate only costs \$20, with proceeds going to fund a variety of projects, such as local stream clean-ups, tree plantings, stormwater restoration projects, and field trips for Maryland students. The Bay plate is the primary source of revenue for the Chesapeake Bay Trust and allows the organization to engage more than 100,000 Marylanders each year who are making a difference for local communities and the Chesapeake Bay. Every year the Trust seeks to reach more and more Marylanders to let them know that purchasing a Bay plate is one of the easiest ways they can help the Chesapeake Bay.



The Maryland Motor Vehicle Administration has been a terrific partner of the Chesapeake Bay Trust, educating potential Bay plate purchasers about the fact that plate dollars go back to a local nonprofit to fund projects in their own communities. The next time you are in a MVA branch or a local car dealership, please remember to ask your salesperson for your new Bay plates. For more information or to order a Bay plate online anytime, visit [bayplate.org](http://bayplate.org).



## A Bird Named Wade

In May 2013, the Trust hosted a "Name that Bird" contest to name the blue heron on the Treasure the Chesapeake license plate. More than 1,500 individuals submitted votes for their favorite name for this Maryland icon. The winner was "Wade," with "Hattie the Heron" and "Seemore D. Bay" as serious contenders!



*Megan Flickinger of Frederick, Md. submitted the winning name "Wade."*

## Individual Donations

The Trust's individual donor program continues to grow, totaling more than \$162,000 for FY13. Each of the more than 1,600 donors and their contributions has greatly enhanced the Trust's grantmaking capabilities and efforts to improve the local creeks, streams, and rivers of the Chesapeake Bay watershed. Special thanks to the Trust's monthly donors whose sustained support helps the organization further stretch its grant dollars. For a full list of this year's donors, visit page 18.



# Events & Awards



On May 10, 2013, the Chesapeake Bay Trust hosted its 15<sup>th</sup> Annual Treasure the Chesapeake Celebration at the Marriott Waterfront hotel in Annapolis. For the first time in the event's history, it **SOLD OUT** with more than 500 attendees who raised \$95,000 to help restore and protect the Chesapeake Bay. Attendees enjoyed fantastic food and drink, a deejay and dancing, a wonderful silent auction and live casino games all overlooking the beautiful

Chesapeake Bay. During the event, the Trust also honored its Trustees Council, a committee composed of former Trust board chairs and trustees, for their outstanding work and commitment to the Chesapeake Bay Trust.

The 2013 Trustee Council includes the Honorable Harry Hughes, Honorable Dr. Torrey Brown, Honorable Virginia Clagett, Paul Allen, Peter Byrnes, Fran Flanigan, Midgett Parker, Martin Poretsky, and Melanie Teems.



*The Trustee's Council is recognized during the Trust's 15<sup>th</sup> Annual Treasure the Chesapeake Celebration.*

The Trust would like to extend its sincerest gratitude to its premier sponsors **Constellation Energy, M&T Bank, the Great Chesapeake Bay Swim, Venable, and Wheelabrator Baltimore.**



## Legislative Reception & Awards Program

In January 2013, the Trust held its Annual Legislative Reception and Awards program in the Miller Senate Office Building in Annapolis. In total, more than 150 legislators, grantees and Bay supporters attended to honor six exceptional individuals and their contributions to environmental education, community outreach and Bay restoration.

**2013 Educator of the Year Award:**  
**Emily Meny**  
**ESPERANZA MIDDLE SCHOOL,**  
**ST. MARY'S COUNTY**



This honor is awarded each year to an educator who has shown an outstanding commitment to environmental education.

**2013 Student of the Year Scholarship: Danielle Fallon**  
**RIVER HILL HIGH SCHOOL, HOWARD COUNTY**



This honor is awarded to an outstanding high school or college student who shows an exceptional commitment to environmental leadership and community involvement.

**2013 Honorable Arthur Dorman Scholarship: Olumayokun Odukale**  
**MORGAN STATE UNIVERSITY, BALTIMORE**



This award was named for the late Senator Arthur Dorman, former chairman of the Trust's board of trustees who was committed to diversity and inclusion in the environment. Each year this honor is awarded to an outstanding high school or college student who demonstrates a commitment to the environment and who, as a student of color, exhibits exemplary leadership in promoting diversity and inclusion.

**2013 Ellen Fraites Wagner Award: Ron Bowen**  
**ANNE ARUNDEL COUNTY DEPARTMENT OF PUBLIC WORKS**

Named for the late Ellen Fraites Wagner, who served on the staff of Governor Harry Hughes and played an instrumental





role in the formation of the Trust in the

1980s, this honor is awarded to an outstanding individual who has shown exceptional commitment to the Chesapeake Bay and leadership in the community.

**2013 Melanie Teems Award:  
The Rosedale Center  
BALTIMORE, MD**



Named for Melanie Teems, the longest-serving Trust staff member at 17 years of service before her retirement in 2009, this award is given to an exemplary project that engages individuals, students and/or the community in Bay education, outreach or restoration work.

**2013 Dr. Torrey Brown Award:  
Secretary John R. Griffin  
MARYLAND DEPARTMENT OF  
NATURAL RESOURCES**



Named for the Honorable Dr. Torrey Brown, a former legislator, Department of Natural Resources secretary, and key founding member of the Trust, this award recognizes an exceptional individual who has shown extraordinary dedication to preserving and protecting the Chesapeake Bay and its rivers.



## 2<sup>nd</sup> Annual 5K for the Bay



## Special Initiatives

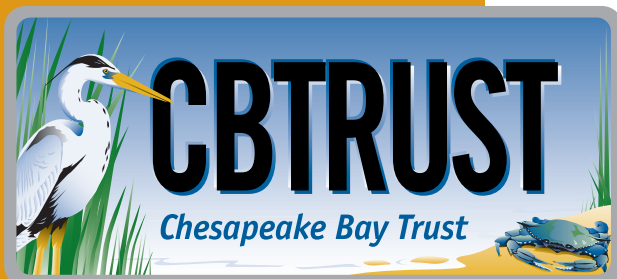
On Saturday, June 22, the Chesapeake Bay Trust hosted its second Annual 5K for the Bay at Quiet Waters Park in Annapolis. Almost 500 runners and walkers joined the Trust for this 3.1 mile run/walk which raised more than \$12,000 for Chesapeake Bay restoration and education. Special thanks to all runners who came out to join the Trust, as well as the organizations that supported this year's race, including the Chesapeake Bay Roasting Company, Annapolis Irish Festival, eCruisers llc, Keller Williams, Fleet Feet Annapolis, Panera, Wegmans, Bowie Baysox, Greenlayer, and JEB Design.





## More than Grant Making: Trust Provides Leadership and Technical Assistance in the Bay Community

In recent years, the Chesapeake Bay Trust has been called upon to serve more than just a grant-making role in the natural resource community of Maryland and other Chesapeake watershed states. The Trust identifies community needs related to our mission, matches them with the strong technical skills of our staff, and participates in strategic areas of expertise that help meet organizational goals.



### Best Available Science to Advance K-12 Environmental Education and Stewardship

The Trust has long been a leader in K-12 environmental education and, more recently, of citizen engagement and behavior change. In recent years, many advances in the social science of student and adult engagement have occurred. For example, we know that outdoor experiences for students increase their capacity to learn key principles, and we know that certain methods of adult engagement result in sustained behavior change. The Trust continues to work with our NOAA, EPA, and other partners to expand our expertise and transfer that knowledge back to our grantees.

### Stormwater, Green Infrastructure, and Green Jobs

Opportunities for non-profit organizations, engineering firms, construction firms, and others abound as resources available for green stormwater practices expand. The Trust has been working to connect these resources to our grantees and to organizations in the watershed. Our partnership with EPA to support stormwater green infrastructure projects through our Green Streets, Green Jobs,



Green Towns Grant Program has expanded ten-fold with the addition of a new partner for fiscal year 2014, the State of Maryland and the Maryland Department of Natural Resources. In addition, the Trust has been working with several counties to help them engage their residents and accomplish their restoration goals, work that promises to expand next year. These new and expanded programs provide opportunities for local green job employment, local green business development, and growth of the non-profit sector as we work together to improve water quality.

### Inclusion of Diverse Audiences

The Trust places a strong emphasis on reaching new and diverse audiences that have not been fully engaged in issues related to our watershed and its streams, rivers, urban tree canopy, forests, parks and other public spaces, and other natural resources. Every resident of Maryland, no matter how far from the open waters of the Chesapeake Bay itself, lives within a few miles of a stream. Research has shown that engaging with natural resources is correlated with human health benefits, reduction in crime, economic benefits, education benefits, and more. For these reasons, the Trust has been working tirelessly on its Diversity Initiative, the goals of which are to increase our reach to a broad range of communities, including people and communities of color, those in underrepresented geographic areas of Maryland, and community groups traditionally unengaged with environmental topics.





The Chesapeake Conservation Corps was established by the Maryland Legislature in 2010 to provide service-learning opportunities and green job training for young people interested in environmental and energy conservation careers. This innovative program matches young people, ages 18-25, with nonprofit and governmental organizations throughout the state for stipend-supported, one-year terms of service. Corps Volunteers work on a variety of environmental initiatives including restoration activities and clean-ups, water quality monitoring programs, energy conservation projects, environmental education, and job training programs for youth. They also develop independent capstone projects, participate in training events, present their work at conferences, and

develop grant-writing and budget management skills.

Due to the success of the program, the Corps has expanded from 16 members in its first year to 21 participants in its second year, and in its third year, which began in August 2012, to a class of 26 exceptional young people. These volunteers bring diverse experience and backgrounds to their host organizations, ranging from habitat assessment and fisheries management to environmental justice efforts and rainforest ecology.

The Chesapeake Conservation Corps program is funded by the State of Maryland and the Chesapeake Bay Trust, with a generous contribution provided by Constellation Energy.

## 2013 Chesapeake Conservation Corps Program Expands

### Providing Jobs in Maryland

Since the program's inception, 40 percent of Corps participants have been hired by their host organizations, thus providing sustained employment opportunities for young people in Maryland. Of the class of 2013, almost 50 PERCENT of Corps participants were hired by their hosts, which is the largest percentage in the program's history. These newly employed individuals bring exceptional expertise and energy to their permanent positions and are helping to build the capacity of their host organizations.

### "All Hands on Deck" Projects and Grant Writing

To provide additional training skills, each Corps participant has the opportunity to apply for a Trust grant to conduct an "All Hands on Deck" project. These grant applications, up to \$1,500, are designed to engage the full participation of the Corps, and in 2013, three projects were chosen. Emily Thorpe with the Maryland Department of Natural Resources, Chesapeake Bay National Estuarine Research Reserve created a nature play space at Jug Bay Wetlands Sanctuary; Latisha Bordley with Environmental Concern constructed a rain garden on their campus; and Tyler Walston with the Nanticoke Watershed Alliance organized an outreach day to beautify the Tom Tyler Nature Trail located on Maryland's Eastern Shore.

### Thank you Class of 2013

Alexis Bryant, Clozynergy  
Amanda Pinzon, CASA de Maryland

Ann Desanctis, Anacostia Watershed Society

Christine Carpenter, U.S. Fish and Wildlife Service

Ellen O'Brien, Midshore Riverkeeper Conservancy

Emily Stransky, Eden Mill Nature Center

Emily Thorpe, Maryland Department of Natural Resources, Chesapeake Bay National Estuarine Research Reserve

Heather Jentilet, Alliance for the Chesapeake Bay

James Traynham, Reservoir Hill Improvement Council

Jennifer Kunze, Amazing Grace Lutheran Church

Karen Zeiter, Rock Creek Conservancy

Katelyn Geiger, South River Federation

Kendra Shillenn, Annapolis Maritime Museum

Kiri Brenner, Montgomery County Public Schools

Latisha Bordley, Environmental Concern



Lien Vu, Potomac Conservancy

Lisa DeGuire, Blue Water Baltimore

Matthew Felperin, Phillips Wharf Environmental Center

Raymond McClain, Chesapeake Bay Foundation

Rich Lefebure, Baltimore County Department of Environmental Protection and Sustainability

Sophie Foscue, Sassafras River Association

Stephanie Pully, National Aquarium in Baltimore

Tim Rosen, Midshore Riverkeeper Conservancy

Tyler Walston, Nanticoke Watershed Alliance

William Saffell, West/Rhode Riverkeeper

Zuzuna Culakova, Echo Hill Outdoor School

Special thanks to Maryland's Department of Natural Resources and Constellation Energy for contributing to the funding of this program.



# Partnerships

## Business Partners

Each year the Chesapeake Bay Trust partners with numerous businesses to raise funds and awareness to help restore and protect the Chesapeake Bay and its tributaries.



- Annapolis Irish Festival
- Annapolis Towne Centre
- Avon Dixon Insurance Agency
- Barrett and Company LLC
- BayDeejays
- Biohabitats
- BriteStar Business
- Bowie Baysox
- By the Bay Botanicals
- BV Wine
- Calvert Marina
- Capital Gifts & Awards
- Central Marine Construction
- Chaney Enterprises
- Charles P. Johnson & Associates
- Chesapeake Bay Roasting Company
- Constellation Energy
- Council, Baradel, Kosmerl & Nolan
- Diageo Chateau & Estate Wines Company
- EcoGardens, LLC
- Eddie Bauer
- Ecological Restoration and Management, Inc.
- Friendship Creative Printers
- GreenVest
- Groupon Grassroots
- Harvest Beer Festival
- Herrington on the Bay
- HeimLantz
- Homestead Gardens
- JEB Design
- Linowes and Blocher LLP
- M&T Bank
- Maryland Seafood Festival
- McHale Landscaping Design
- North Sails America

- OpinionWorks
- Pave Drain
- Rams Head Promotions
- Reliable Churchill
- Shoreline Design
- Straughan Environmental Services, Inc.
- Stormwater Maintenance LLC
- STSG
- Sustainable Science
- T. Rowe Price
- The Hatcher Group
- URS Corporation
- Venable
- Verizon
- VMP Construction
- Vulcan Materials Company
- Weitzman Agency
- Wheelabrator Baltimore
- Whole Foods

## Federal, State and Local Agency Partners

The Trust collaborates with a host of federal, state and local agencies on its grant programs and specific initiatives to support restoration and outreach programs.



- National Oceanic and Atmospheric Administration (NOAA) Restoration Center
- National Oceanic and Atmospheric Administration (NOAA) Chesapeake Bay Office
- U.S. Environmental Protection Agency Region 3
- U.S. Environmental Protection Agency Chesapeake Bay Program
- U.S. Department of Labor

- Smithsonian Environmental Research Center
- Comptroller Office of Maryland
- Maryland Department of Agriculture
- Maryland Department of Natural Resources
- Maryland Department of the Environment
- Maryland Motor Vehicle Administration
- Maryland State Department of Education
- Anne Arundel County Forestry Board
- Charles County Government

## Foundation and Nonprofit Partners

Numerous foundation and nonprofit partners offer their funding and expertise to raise awareness and further our shared mission of enhancing Bay stewardship.



- Agua Fund, Inc.
- Alliance for the Chesapeake Bay
- American Sportfishing Association
- Association of Maryland Pilots
- blue moon fund
- Bunting Family Foundation
- Center for Watershed Protection
- Chesapeake Bay Foundation
- Chesapeake Bay Funders Network
- Chester River Association
- Evergreen Heritage Center Foundation
- Foundation for Pennsylvania Watersheds
- Gunpowder Valley Conservancy
- Interfaith Partners of the Chesapeake
- Irvine Nature Center
- Maryland Association of CPAs
- Maryland Environmental Service
- MARPAT Foundation
- Midshore Riverkeeper Conservancy
- Nabit Foundation/Great Chesapeake Bay Swim
- National Wildlife Federation
- National Fish and Wildlife Foundation

- Oyster Recovery Partnership
- Parks and People Foundation
- Port Tobacco River Conservancy
- Prince Charitable Trusts
- Rauch Foundation
- Sassafras River Association
- The Annie E. Casey Foundation
- The Curtis and Edith Munson Foundation
- The Keith Campbell Foundation for the Environment
- The Morris & Gwendolyn Cafritz Foundation
- The Peterson Family Foundation
- Town Creek Foundation
- Water Words that Work
- West/Rhode Riverkeeper

## Chesapeake Bay Funders Network

The Chesapeake Bay Trust is proud to be a member of the Chesapeake Bay Funders Network, a funding collaborative dedicated to improving the capacity within communities to initiate and sustain change to promote a healthier Chesapeake Bay. CBFN provides opportunities for grantmakers to network and exchange information while developing shared strategies for the protection and restoration of the Chesapeake Bay, and the waters, lands, and communities of the broader watershed.





**The Chesapeake Bay Trust would like to thank the thousands of individual donors, local businesses, corporations and family foundations who have supported our work this past year. Without your support, the Trust would not be able to accomplish so much to help restore the Chesapeake Bay and its rivers. Thank you for your partnership and we look forward to a wonderful 2014!**

## Over \$100,000

Chesapeake Bay and Endangered Species Fund Tax Check-off Contributors  
Maryland Bay Plate Owners  
Maryland Department of the Environment  
Maryland Department of Natural Resources  
National Fish and Wildlife Foundation  
National Oceanic and Atmospheric Administration (NOAA)  
Town Creek Foundation  
U.S. Environmental Protection Agency

## \$25,000-\$99,999

Agua Fund, Inc.  
blue moon fund  
Prince Charitable Trusts  
Constellation Energy  
Evelyn Fraites Foundation  
Rauch Foundation  
The Keith Campbell Foundation for the Environment  
The Morris & Gwendolyn Cafritz Foundation  
U.S. Department of Labor  
West/Rhode Riverkeeper

## \$10,000-\$24,999

Anonymous  
Bunting Family Foundation

## \$5,000-\$9,999

Annapolis Irish Festival  
Anne Arundel County Forestry Board  
Anonymous  
Cooper Thomas  
Doppelt Family Foundation  
Frank M. Ewing Foundation  
M&T Bank  
North Sails Group, LLC  
The Bresler Foundation  
The Nabit Foundation/Great Chesapeake Bay Swim  
Venable Foundation, Inc.  
Wheelabrator Baltimore

## \$2,500-\$4,999

Annapolis Triathlon Club  
Katcef Brothers, Inc.  
Linowes and Blocher, LLP  
LivingSocial  
Peterson Family Foundation  
Verizon  
Whole Foods

## \$1,000-\$2,499

Alison Hatch  
American Sportfishing Association  
Annapolis Towne Centre  
Britestar Business Solutions  
Calvert Marina  
Chaney Enterprises  
Chesapeake Bay Foundation  
Chesapeake Bay Roasting Company  
Chris Graae  
Christian Crowley, in honor of Steve Crowley  
Groupon  
HeimLantz, P.C.  
Holly and Michael McFarland  
Howard and Melany Levenson  
J.P. Morgan National Philanthropic Trust  
Jana Davis  
Jen Family Charitable Trust  
Judith and Edwin Cohen Foundation  
Michael and Jennifer Wargo  
OpinionWorks  
Oscar Linares  
Peter and Marianne Byrnes  
Phaedra Singelis  
Robert Wright  
Robin Bond  
Shoreline Design, LLC  
Stephen Simko  
Straughan Environmental Services, Inc.  
T. Rowe Price

The Annie E. Casey Foundation  
The Hatcher Group  
The MHE Foundation  
VMP Construction  
Vulcan Materials Company  
Warren and Anne Hamel  
William and Michele Nalls

## \$500-\$999

Aaron and Betty Gilman Family Foundation Trust  
Al Todd  
Andrew and Trudy Snope  
Association of Maryland Pilots  
Brenda Larson  
Carrie Stockwell  
Central Marine Construction  
Charles P. Johnson & Associates  
Claire Barile  
Eileen Geier  
Eric and Karen Kuwana  
ExxonMobil Foundation  
Foundation for Pennsylvania Watersheds  
Friends of Valerie Ervin  
George and Lana Staples  
GreenVest  
Gunpowder Valley Conservancy  
Homestead Gardens  
Honorable Virginia Clagett  
James Swigert  
Jessica MacBride  
John and Kim Quinn  
John Bennett  
Joseph Gill  
Judy Urbanczy  
Lisa Lingis  
Luke McCrone  
Marilyn Hickey  
Mark Gilman  
Mary-Scott Kaiser  
Midshore Riverkeeper Conservancy  
Mike and Beth Johnston  
Phillip and Marian Griffiths  
Robert Ekman  
Ronald Shorb  
Ruben Esteban Llorente  
Stormwater Maintenance LLC  
Tara Potter  
The Associated: Jewish Community Foundation of Baltimore  
The Lane Construction Company  
Thomas Andrews  
Weitzman Agency

## \$250-\$499

Alliance for the Chesapeake Bay, Inc.  
Avon Dixon Agency, LLC  
Barrett and Company LLC  
Biohabitats  
Blue Water Baltimore  
Bruce Mackay  
Capital Gifts and Awards  
Carol Hurlburt  
Center for Watershed Protection Inc.  
Chester River Association  
Christopher Tippet  
Critical Reach Access, LLC

# Donors

## \$250-\$499 (continued)

Daniel Bilko  
Darlene Bookoff  
David and Melanie Mustone  
EcoGardens, LLC  
Ecological Restoration and Management, Inc.  
Eddie Bauer  
Eddie McGowan  
Edwin Richardson  
Ellen Ewart  
EMCO Site Solutions  
Evergreen Heritage Center Foundation  
Frederic Pement  
Gene Downing  
George Tyler  
Gerhard Thelen, in memory of Geoff Myers  
Ginny Kearney  
Glenn Pfadenhauer, in honor of Dotty and Jerry Pfadenhauer  
Hugh S. Andrew Trust  
Interfaith Partners for the Chesapeake  
Irvine Nature Center  
Jack Clarke  
James Joesel



James Tucker  
Jeffrey Huvelle  
Joanne Darkey  
John Miller  
John Preisinger  
John Rowe  
Joy Naquin  
Julie Steinhardt  
Lauren Phipps  
Lisa Spallitta  
Margaret Palmer  
Mark and Robyn Strayer  
Maryland Environmental Service  
McHale Landscape Design  
Michael Armstrong  
Michael Byrum  
Michael Heffner  
National Wildlife Federation  
Parks and People Foundation  
Pave Drain  
Peter Grace  
Phil Bye  
Port Tobacco River Conservancy  
Priscilla Cooper  
Rams Head Promotions  
Rebecca Chasan  
Robert Book  
Robert Rodriguez  
Sassafras River Association  
STSG  
Steve Linhard  
Steven and Kelly Russo  
Strong Foundation of New York  
Susan Severo  
Sustainable Science, LLC  
Terence and Suzy Smith  
URS Corporation

## \$100-\$249

A.R. Weeks  
Adrienne Hedman  
Allison McAlister  
Alysia Feuer  
Amelia Gary  
Anacostia Watershed Society  
Andrea Kraus  
Anita Parnis  
Ann Vinore  
Ayala Family, in memory of David Humberto Pagan  
Barbara Burst  
Barbara Rothstein  
Bay Green Properties  
Bernard Hartwig  
Bharath Chandar  
Bob Gallagher  
Brian Engler  
Brigham Bowen  
Carl Bergman  
Carl Luebben  
Carole Carter  
Carole Sanner, in memory of Joseph W. Alton, III  
Carolyn Houk  
Carroll Hendrickson, Jr.  
Carserlo Doyle  
Cecelia Cropley  
Chad Dobson  
Charles Hager  
Charles McIntosh  
Cheryl Edwards  
Cheryl Seats  
Claudine Patton

Clifford Blackstone  
Craig Pernick  
Dan and Amy Clements  
Darlene Levenson  
David Goldblum, in memory of Michael  
Stephen Davidson  
Deborah Hanka  
Desmond Welch  
Diane Leonard  
Diane Minear  
Don and Taruna Barber  
Donald and Renate Powers  
Donald Moore  
Donald Sigmund  
Dorothy Sauer  
Dorothy Stevens  
Douglas Soule  
Drew Smith, in honor of Rob Frier  
Duane Degler  
Earle Bates  
Edward Allen  
Edward Hermann  
Edward Steinhouse  
Eileen Kraus-Jakobsberg  
Eileen Witheford Ruppel  
Elena Takaki  
Elisabeth Jones  
Elizabeth Johnston  
Elizabeth Moser  
Ellen Oberholtzer  
Eric Schmale  
Erich Burger  
Erik Michelsen  
Ernest Thomas

Esko Hallila  
Estelle Ison  
Eugene Hoenig  
Eugenia Rhoten  
Foster Hutchinson  
Frances Peck  
Franklyn Dailey  
Fredrika Moser  
G.S. Bunn  
Gary Baillio  
George Lentz  
George Smidt  
Gerry Zinck  
Gina Perkins  
Glenna Haynie  
Gwyn Degner  
Harleigh Ewell  
Harry Hughes  
Hermes Van Der Lee  
Herrington on the Bay  
Honorable Shane Robinson  
Humberto Olivera  
Jack Stern  
James Chandler  
James Dean  
Jane Miller  
Janet Jeffers  
Jean Jacocks  
Jean Kaliner  
Jeanine Seymour  
Jeanne McCann  
Jeff and Angie Mentzer  
Jeff Finken  
Jeffrey and Cheryl Gramling  
Jeffrey Harris



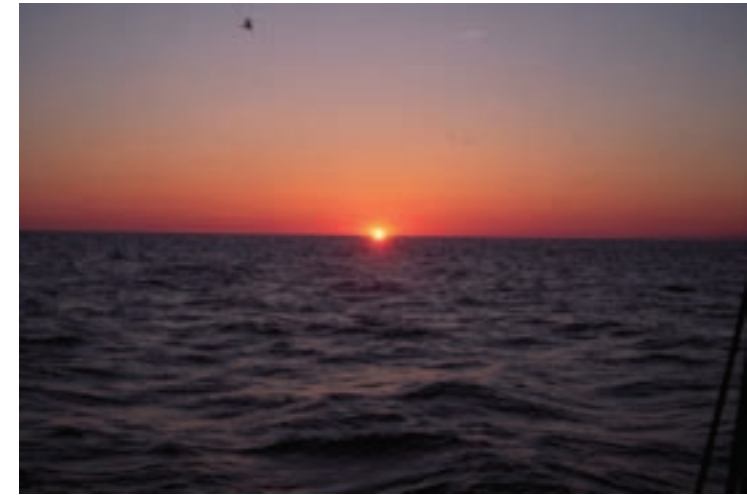
## \$100-\$249 (continued)

Jenny Clark  
Jerome Julius  
Joan Oberholtzer  
John and Cora Lamond  
John and Julia Thackrah  
John and Tina Li, in  
honor of Kang-Xing  
and Jennifer Jin  
John Bacon  
John Cervin  
John Dixon  
John Evans  
John Frazier  
John Hannon  
John Light  
John Marchetti  
John Sullivan  
John Williamson  
Joseph Devlin  
Joshua Falk  
Joshua Roane  
Joyce Kalb  
Joyce Quintavalle  
Judith Chinn  
Judith Smith  
June Brosnan  
K. Michael Murphy  
Karen Johnson-Stoj  
Karen Schulden  
Katharine Morgan  
Katherine Morgan  
Kathy Clowe  
Kelly Colleran  
Kenneth Lauderdale  
Kenneth Williams

Kerry Blume, in memory  
of David Humberto Pagan  
Kevin and Diane Kean  
Kevin Joesel  
Klaus Whitehead  
Kurt Reisenberg  
L.R. and S.M. Embrey  
Larrie Greenberg  
Larry Feather  
Laura Noell  
Lauren Hamilton and  
Chris Walters, in honor  
of Ellen Brown and  
Jim Krauk  
Lauren Olan  
Laurie Jenkins  
Lawrence Maloney  
Leonard Schuchman  
Leroy Westbrook  
Leslie Derr  
Lina Chen  
Lisa Dignazio  
Lloyd Oliver  
Lois Hartman  
London Towne Property  
Owners Association  
Louise Crouter  
Louise Lawrence  
Lynne and Bill Fitzhugh  
Marc Apter  
Marc Wirig, in memory of  
Joseph W. Alton, III  
Maria Hidalgo  
Mark Briggs  
Mark Sandstrom  
Marshall Tucker  
Mary Bonomo  
Mary Spiri

Mary-Helen Coogle  
Matthew Adler  
Matthew Boyle  
Melissa Jones, in memory  
of Geoff Myers  
Micah Kleid  
Michael and Kristan  
Halaiko  
Michael Beer  
Michael Galvin  
Michael Helfrich  
Mike Eckhart  
Mitchell Pressman  
Monica Jenkins  
Nan Miller  
Nancy Eason  
Nancy Pielemeier  
Nathaniel Breed  
Nicholas DiPasquale  
Paul and Mary Foringer  
Paula Gil  
Penelope Nelson  
Penny Boyce  
Penny Van Dellen  
Peter Goodwin  
Peter Haas  
Peter Larsen, in honor  
of Elise Larson  
Peter Smith  
Philip Metzler  
Philip True  
Richard Lietzke  
Richard Strom  
Richard Stubbs  
Richenda Davison  
Rick Murnane  
Rita Posner

Robert and Joan Sydnor  
Robert and Kathy Kass  
Robert and Winona  
Hocutt  
Robert Batchelor  
Robert Blunt  
Robert Drechsler  
Robert Hairfield  
Robert Hoekstra  
Robert Winter  
Robert Holum  
Robert Lowe  
Robert Moss  
Roberta Carlisle  
Roberta Scherer  
Rodney Yoder  
Roger Schermerhorn  
Roger Umstott  
Ronald and Joanne  
Creamer  
Ronald Farrah  
Roselle Harde  
Russell Reno, Jr.  
Ruth Davila  
Sally Meyer  
Samuel Rogers  
Sara Paulson  
Sarah McGraw  
Scenic Rivers Land Trust  
Scott Doran, in memory  
of Joseph W. Alton, III  
Scott Najaka  
Sharon Blackburn  
Sharon Greco, in memory  
of Joseph W. Alton, III  
Sharon Nelson



Shawn Alexander  
Shirley Hutchinson  
Shirnavaz Morelli  
Sigrid Hepp-Dax  
Simon James  
Stanley Woodward  
Susan Dery  
Susan Farnsworth  
Susan Ford  
Susan Green  
Susan Roth  
Susan Wheeler  
Sylvia Griswold  
The Glasgow Family, in  
memory of Geoff Myers  
The Hess Family  
Theodore Wilson  
Theresa Furnari  
Thomas Abrams  
Thomas Jameson

Thomas Thomas  
Thomas Wenz  
Tim Olinick  
Todd and Julie Lovinger  
Tom Leigh  
Tyler Mahy  
Virginia Bridges  
Warren Rudduck  
Water Words that Work  
William Chesnutt  
William Egan  
William Kelso  
William Miller  
William Nichols  
William Signer  
William Trapnell  
Wilma Yurche  
Yvonne Carignan

# Donors

## Up to \$100

Adam Dormuth  
Adam Levin-Epstein  
Adrian Flynn  
Al Carr  
Alan Ward  
Alan Weiner  
Albert Bongiovi  
Albert Copenhaver  
Albert Copp  
Alberta Eidman  
Alex Heathcote  
Alexa Watson  
Alexander Waitkus  
Alexandra Teitz  
Alexandra Wilson  
Alexandra Woods  
Alfredo Hernandez  
Alice Rabin  
Alice Tracy  
Alise Orloff

Allison Gale  
Allison Wright  
Alyson Hudson  
Amanda Cole  
Amanda Groth  
Amanda Miller  
Amanda Mock  
Amanda Pinzon  
Amanda Weber  
Amelia Dotson  
Amy Ann Hutchinson  
Amy Hanna  
Amy Luca  
Amy Manougian  
Amy Peoples, in memory  
of Geoff Myers  
Amy Rohr  
Andrea Kibalo  
Andrew Beaulieu  
Andrew Bower  
Andrew Burger  
Andrew Dobin

Angela Habart  
Angela Bowers  
Angie Voll  
Ann McCarthy  
Ann Neeley  
Ann Paul  
Anna Hurd  
Anne Gellner  
Anne Guillette  
Anne Horn, in honor  
of Tim Bruursema  
Anne Sapir  
Anne Schwarzwald  
Annie Holley  
Annie Lalor  
Anthony Aversa  
Anthony Davis  
Anthony Kochis  
Anthony Salemi  
Antoinette Mclarty  
Arthur Blume  
Arthur Latchaw

Arthur Joseph  
Ashley Heffernan  
Asia McGill  
Augusta Hunt  
Baird Straughan  
Barbara Barnes  
Barbara Bennett  
Barbara Cronin  
Barbara Falkinburg  
Barbara Muhlbacher  
Barbara Pasek  
Barbara Ramey-Wallace  
Barbara Ryback  
Barbara Schoeberl  
Barbara Stewart  
Barbara Wolfert  
Barry Palmer  
Beatrice Cook  
Benjamin Greenspon  
Benjamin Schmitt  
Bernadette Vaughn-  
Farley

Bernard Hildebrand  
Bernard Nalty  
Bernard Roberts  
Beryl Maloney-Lillaston  
Beth Dawson  
Beth Rushwort  
Betty Borland  
Betty Bott  
Betty Masket  
Betty Wells  
Beverley Rouzer  
Beverly Appell  
Beverly Breitman  
Bowie Montessori  
Children's House  
Beverly Rucker  
Bill Crowley  
Bill Just  
Bonnie Nicholson  
Bonnie Castille  
Bonnie Davis-Isom  
Breann Pleasant  
Brenda Bazemore  
Brenton Campbell  
Brett Clarence  
Brian and Shannon Fong  
Brian Fennelly  
Brian Mazzella  
Brian Reed  
Brian Richter  
Bridget Simms  
Bruce Hays  
Bruce Johnson  
Bruce Odessey  
Bruno Vasta  
Bryan Perry  
Bryan Sfalanker  
Bryanna Steiner  
Burnard Herndon  
Burt Dall  
By the Bay Botanicals  
Candy Munson

Caprice Di Lietto  
Cara Scharf  
Carl Davis  
Carla Tevelow  
Carmen Alban  
Carol Boggs  
Carol Doorandish  
Carol Jelich  
Carol Pruner  
Carole Sargent  
Caroline Albert  
Caroline Hazard  
Caroline Miller  
Carolyn Pelosi  
Carolyn Coon  
Carolyn McDaniel  
Carolyn Ward  
Carrie Bowles  
Carroll Rinehart  
Caryn Jackson  
Cassandra Kercher  
Caterina Brooks  
Catherine Holloway  
Catherine Korzen  
Catherine Kuehn  
Catherine Soares  
Cecelia Blalock  
Cemile Bingol  
Chad Bickel  
Chad Edison  
Charlene Fuller  
Charles Bartfeld  
Charles Dougherty  
Charles Fleischer  
Charles Kennerly  
Charles Nicodemus  
Charles Rice  
Charles Rogers  
Charles Scott  
Charles Soukup  
Charles Thompson

Charlotte Gardner  
Charlotte Glinski  
Charlotte Tabisz  
Chelsey Rush  
Cheryl Lee  
Chesney Wells  
Chris Barnum  
Chris Figueras  
Chris Hogger  
Chris Selmer  
Christina Gallo  
Christina Piccioni  
Christine Bailey  
Christine Blunt  
Christine Ricucci  
Conchita Tuers  
David Haman  
David Verchomin  
Christine Rosenbloom  
Christopher Damon  
Christopher Hayden  
Christopher Mueller-  
Smith  
Christopher Vale  
Claire Porter  
Claire Woodfin  
Cleanthe Cocoros  
Colleen Brown  
Connie Musgrove  
Conway Perkins  
Courtney Mitchell  
Craig and Stacey  
Fontenot  
Craig Nickel  
Craig Norton  
Cristina Miller  
Cynthia Lauster  
Dan Laird  
Dan Rice  
Dana Kibbey  
Dana Trzeciak  
Daniel Shivley

Daniel Garry  
Daniel Hellerstein  
Daniel Shultz  
Danielle Dunn  
Danielle Fallon  
Danielle Riggins  
Danielle Wohlgenuth  
Danika Hyssong  
Danni Magill  
Danny Patry  
Daphne Fuentevilla  
Darden Bennett  
David and Gayle Bastian,  
in memory of Joseph  
W. Alton, III  
David Barbour  
David Clunies  
David Drew  
David Ehrhart  
David George  
David Haman  
David Oue  
David Pettit  
David Pratt  
David Titus  
David Fleming  
Dawn Jones  
Dean Crouch  
Dean Hoover  
Dean Patterson  
DeAnna Jackson  
Stalnaker  
Deanna Marshall  
Debaki Chowdhury  
Deborah Wetzel  
Debra Murphy  
Dee Wagner  
Denise Robinson  
Derek DelQuadro  
Derek Wallbank  
Derrick Anderson  
Desiree Stover





## Up to \$100 (continued)

Devin and Nadeau  
Hahne  
Diana Childress  
Diana Weatherby  
Diane Donnelly  
Diane Mesirow  
Diane Oliver  
Dianna Harvey  
Dolores Niewenhous  
Don Chirieleison  
Donald Martin  
Donald Preston  
Donald Walter  
Donald Warner  
Doni Guggenheimer  
Donna Wenzel  
Donna Woolfe  
Donna Smith  
Doretha Bivens  
Doris Bartley  
Doris Froelich  
Doris Taweel  
Dorothy Beidleman  
Dorothy Gilford  
Dorothy Gustafson  
Dorothy Litzinger  
Dorothy Manseau  
Dorothy Wooster  
Doug and Natalie Ewalt  
Duncan Wallace  
Dympnia Jessich  
Eala Clarke  
Ed Haerold  
Edgar Raines  
Edith Johnson  
Edith Lam-Nardone  
Edna Armstrong  
Edward and Margaret  
Haser

Edward and Diann  
Nazarian, in memory  
of Geoff Myers  
Edward and Marie  
Newman, in memory  
of Joseph W. Alton, III  
Edward Dennis  
Edward Garnett, in  
honor of Carl Baron  
Edward Gross  
Edward Murray  
Edward Springer  
Edward Steele,  
in honor of Mr. and  
Mrs. William Papian  
Eileen Clegg  
Elaine Sheldon  
Elaine Trovato  
Elaine Gaynes  
Elayne Heisler  
Elisabeth Lescault  
Elizabeth Buckell  
Elizabeth Burin  
Elizabeth Caplan  
Elizabeth Clickner  
Elizabeth Gamble  
Elizabeth Hamilton  
Elizabeth Hartge  
Elizabeth Middleton  
Elizabeth Payer  
Elizabeth Reitz  
Elizabeth Ross  
Elizabeth Tillett  
Ellen Caruso  
Ellen Gordon  
Elliot Maxwell  
Elma Molloy  
Elmer Meadows  
Eloise Hendrixson  
Eloise Ullman  
Elyse Pohl

Emerson Markham  
Emily Alexander  
Emily Baird  
Emily Bowlby  
Emily Caputo  
Emily Clowser  
Emily Durkee  
Emily Geller  
Emily Vaughan  
Emmanuel Atsalinos  
Eric Forste  
Eric See  
Eric Sklarew  
Eric Whisenhunt  
Erica Caputo  
Erika Neidhardt  
Erin Grove  
Esteban Velasquez  
Ethel Forlifer  
Eugene Edgett  
Eugene Galvin  
Euna Edwards  
Evalane Hardin  
Evan Berger  
Evelyn Adkins  
Faris Hawit  
Flora Beers  
Frances Boczon  
Frances Brannigan  
Frances Kilcullen  
Frances Lentz  
Frances Randall  
Francesco Celi  
Francis Coyle  
Francis Gosnell  
Francis Michelsen  
Frank Dinh  
Frank Ecker  
Frank Erk  
Frank Marquez  
Frank Moyer

Frank Von Rinteln  
Frank Williams  
Franklin Michels  
Franklin Seney  
Frederick Adams  
Gabriel Smith  
Gabrielle Long  
Gail Lowery  
Gail Musante  
Galena Cox  
Garrett Hunt  
Gary Moulton  
Gary Schroder  
Gay Kolski  
Gene Wood  
George Balas  
George Godfrey  
George Niederhe  
George Sisson  
George Steffens  
George Swatzbaugh  
George Wallace  
Gerald Slayman  
Gerald Smoot  
Gerard Rohlf  
Giao Phan  
Gina Covi  
Ginevra Hunter  
Ginger Blomberg  
Glenn Wietry  
Glenna Blessing  
Gloria Barrett  
GoodSearch  
Green Life Wellness  
Gregory Scott,  
in memory of Joseph  
W. Alton, III  
Gwen Goldman  
H. Braswell, Jr.  
H. Jay Penny  
Hans Bruch  
Hans Gerhard

Harmon Joyner  
Harold Dobbins  
Harold Wheeler  
Harry Campbell  
Harry Hendrickson  
Harry Nevins  
Hawsie Crisfield Nash  
Heather Jorgensen  
Heather Louizes  
Heather Markle  
Heather Pearson  
Heather Peddicord  
Heather Woodfin  
Heidemarie Bibber  
Heidi Bossley  
Helen Dodge  
Helen Gorman  
Helen Mccann  
Helene Farrell  
Henry Gutman  
Henry Dugan, Jr. and  
Caroline Griffin  
Herbert Berkowitz

Herbert Myers  
Hiking Along  
Hilda Abdon  
Hilton Graham  
Holly Dalton  
Howard Marshall  
Howard Needle  
Hugh Gardiner  
Ingeborg Hanbauer-Costa  
Ingrid Jones  
J. Carroll Osgood  
Jack Berens  
Jack Kammerer  
Jaclyn Kelly  
Jacob Cunningham  
Jacob Meerman  
Jacqueline Fritsch  
Jacquelyn Jorns  
Jacques Hadler  
Jade Jackson  
Jaime Bauer  
Jaime Glorioso  
James Cohee

James Dickie  
James Dominick  
James Gelatt  
James Kinney  
James McQueen  
James Menke Vadt  
James Mildenberger  
James Morris  
James Mortenson  
James Palmer  
James Prech  
James Rooney  
James Sanders  
James Simmons  
James Summerville  
James Thomas  
Jamie Adkins, in memory  
of Kirk Cantrell  
Jamie Darr  
Jamie Kohr  
Jan Eskite  
Jane Picot  
Janet Brown

Janet Todd  
Janice Herman  
Janice Kilar  
Jay Garrett  
Jean Jones  
Jean Schneider  
Jean Schubert Depetris  
Jean Wilson  
Jeff Rubino  
Jeffrey Baer  
Jeffrey Blum, in memory  
of Joseph W. Alton, III  
Jeffrey Cohn  
Jeffrey Ehrlich, in honor  
of Kurt and Kevin Willson  
Jeffrey Logeman  
Jeffrey Marks  
Jeffrey Swope  
Jen Thayer  
Jennifer Forella  
Jennifer Lange  
Jennifer Lescallett  
Jennifer Manson

# Donors

## Up to \$100 (continued)

Jennifer Mitchell  
Jennifer Shaffer  
Jennifer Thornberry  
Jennifer Yauck  
Jenny Dong  
Jeremy Wyatt  
Jessalyne Charles  
Jessica Conley  
Jessica Wisner  
Jill Booth  
Jillian Haigood  
Jim Buffington  
Jim Campbell  
Jo Ann Mann  
Joan Cooper  
Joan Cunningham  
Joan Gebhardt  
Joan Gugerty  
Joan Heaps  
Joan Lane  
Joann Grayson  
Joanne Johnson  
Joanne Mitchell  
Joe Bratchie  
Joe Brenner  
Joe Buriel  
Joe Lombardo  
Joe Murphy  
Joel Wotell  
Johanna Robinson  
John and Cynthia Reilly  
John and Mary Pugh  
John and Pat Taylor  
John Bowden  
John Cox  
John Dombrowski, Jr.  
John Hopkins  
John Lewis

John Lipetz, in memory of Howard Lipetz  
John Marlow  
John Pickeral  
John Ray  
John Restall  
John Ringwood  
John Spence  
John Taylor  
Joyce Siegel  
John Von Kadich  
John Weiss  
John Whitman  
John Williamson  
John Zuskin  
Jolie Wax  
Jonas and Jean Legum, in memory of Joseph W. Alton, III  
Jonathan Bazemore  
Jonathan McLane  
Joselyn Stahl  
Joseph Provenzano  
Joseph Brent  
Joseph Hollowell  
Joseph Humenik  
Joseph Lawrence  
Joseph Mensch  
Josephine Grisanti  
Josi Colley  
Joyce Jefferson  
Joyce Kraimer  
Joyce McKeough  
Joyce Siegel  
Juanita Sala  
Judith Hollowell  
Judith Rowe  
Judith Whitaker  
Judy Devlin  
Judy Muddy

Jule Szabo  
Julia Concha  
Julia Mussog  
Julian Silk  
Julianna Hegarty  
Julie Hester  
Juliette Wheeler  
Kaila Ward  
Kameron Ward  
Karen Conroy  
Karen Hogan  
Karen Natkin  
Karen Temple True  
Karin Olsen  
Kate Pinkerton  
Katherine Jaouni  
Katherine Mead-Brewer  
Kathleen Flibbert  
Kathleen Muller  
Kathleen Rhodes  
Kathleen Spears  
Kathryn Aquilla  
Kathryn Cook  
Kathryn Sutkus  
Kathryn Sutton  
Kathryne Hansell  
Kathy Doud  
Kathy Shock  
Kathy Vavrina  
Katja Davidson  
Kaylenna Blessing  
Keats Smith  
Kelli Ordakowski  
Kelli Wilson  
Kelly Cunningham  
Kelly Herdrich  
Kelsey Sugrue  
Ken Heist  
Ken Hurst  
Ken Li  
Kenneth and Tatyana Stanley

Kenneth Friend  
Kenneth Healy  
Kenneth Lerch  
Kenneth Paulsen  
Kenneth Williams  
Keri Allen  
Kim Odrain  
Kim Reese  
Kimberly Busch  
Kimberly Gough  
Kimberly Todd  
Kristel Rabideau  
Kristin Aleshire  
Krystal Bridges  
Kurt Saberg  
L. Edward Witt  
Lanah Koelle  
Larry and Barbara Graham  
Larry Reusche  
Latham Padgett  
Laura Hurst  
Laura Kuykendall, in honor of John and Anne Kuykendall  
Laura Lyon  
Lauren Buffington  
Lauren Miguez  
Lawrence Milan  
Leah Robinson  
Lee and Carol Smith  
Lee Hatfield  
Leigh Anenson  
Lenore Salzman  
Leo McDonagh  
Lesley Cook  
Leslie Rhodes  
Libby Nelson  
Libby Steinberg  
Linda Bageant  
Linda Bradley  
Lindsay Frank

Lindsay Lang  
Linda Walker  
Lindsay Ward  
Lindsey Millen  
Lisa and Jonah Childress  
Lisa Anderson  
Lisa Barber  
Lisa Hancock  
Lisa Pare  
Lisa Richardson  
Lisa Rossi  
Liz Barnhart, in memory of Geoff Myers  
Liz Metz  
Lore Rosenthal and Michael Hartman  
Loretta Collins  
Loretta Husemann  
Lois Weber  
Loren O'Brien  
Lorrie Dameron  
Louis Boston  
Louise Halley  
Lucy Grace Chapman  
Lynda Bennett  
Lynette Geisert  
Lynn Balzer-Martin  
Lynn Bedard  
M. Lipp  
Mac McAlister  
Margaret Topping  
Mary Beth Steele  
Martina Rao  
Meg Thomas  
Merle Sturm  
Melissa Bunker  
Malcolm Hutto  
Mandy Paice  
Marcia Bird  
Marcia Phyllaier  
Marcia Vanhorn  
Margaret Black

Margaret Cullom-Levine  
Margaret Engelhardt  
Margaret Fallon  
Margaret Pryor  
Margaret Raby  
Margaret Twilley  
Margot Rund  
Margriet Mitchell  
Mari Hernandez  
Maria De Z Meyer  
Maria Green  
Marian Gordon  
Marie Coulter  
Marie Rossiter, Jr., in memory of Geoff Myers  
Mariel Yarbrough  
Marilyn Bates  
Marjorie Gustafson  
Marjorie Tischler  
Mark Addleson  
Mark and Rhonda Wardlaw  
Mark Freeman  
Mark Glogen  
Mark Kellogg  
Mark Polivka  
Mark Porter  
Mark Riddle  
Mark Robinson  
Mark Roskin  
Mark Shimshak  
Mark Spivey  
Mark Theby  
Markonette Richardson  
Marsha Springs and Jo Foster, in honor of Jan Tyler and Jeri Davenport  
Martha Barth  
Martha Myers  
Martin Maher  
Martin Miller  
Mary Anne Espenshade

Mary Anne Williams  
Mary Beth Friedel  
Mary Beth Steele  
Mary Donovan  
Mary Garinther  
Mary Jones  
Mary Kay Ganning  
Mary Knight  
Mary Latka  
Mary Lou Palucki  
Mary McCutchan  
Mary Nelson  
Mary Rodriguez  
Marylou Starling  
Mathias Mueller  
Matthew and Desiree Stover  
Matthew Anderson  
Matthew Cowan  
Matthew Edwards  
Matthew Ferguson  
Matthew Mohr  
Maureen Turner, in memory of Geoff Myers  
Maureen Lalor  
Maureen Zeiss  
Megan Holcomb  
Megan Newell  
Megan Sleman  
Melanie Clark  
Melinda Keenan  
Melissa Blaney  
Melissa Luxner  
Melissa Stellfox  
Melvin Axilbund  
Mia Speight  
Michael Anderson  
Michael Arones  
Michael Broadwater  
Michael Heny  
Michael Laurencell

Michael Levin-Epstein  
Michael Maltagliati  
Michael Monnin  
Michael O'Brien  
Michael Tsottles  
Micheal Pretl  
Micheal Stricker  
Michele Gardiner  
Michele Morgado  
Michelle McPherson  
Mike Eckhart  
Monica Zaleski  
Miranda Vest  
Miranda Goldberg  
Molly Alton Mullins  
Molly DeBusschere  
Mona Lisa Flicker  
Myron Horn  
Nancy Caldwell  
Nancy Harvey  
Nancy Henley  
Nancy Kapuschansky  
Nancy Alper  
Nancy Cox  
Nancy Gaynor  
Nancy Gordon, in memory of Joseph W. Alton, III  
Nancy Irvine  
Nancy Miller-Ihli  
Nancy Schmid  
Nancy Simpkins  
Natalie and Beth Spickler  
Natalie Ewalk  
Natalie Pien  
Natalie Cabrera  
Natalie Miller  
Nathaniel Forgotson  
Neil Berman  
Nicholas Burgess  
Nicholas Dressel  
Nicholas Newlin



## Up to \$100 (continued)

Nicole Barrantes Vidal  
Nicole Drummond  
Nicole Kibalo  
Noelle Tarr  
Norann Beck  
Norma Loeser  
O. Lee and Phyllis Davis  
Olga Owens  
P. Bridget Young  
Pamela Carter  
Patricia Flynn  
Patricia Gurevitch  
Patricia Lavato  
Patricia O'Connell  
Patricia Schuetz  
Patricia Shryock  
Patricia Stanley  
Patricia Tracey  
Patricia Xeller  
Patrick Hantske  
Patton and  
Jacqueline Allen  
Patty Garrity  
Paul Enck  
Paul Jones  
Paul McGuirk  
Paul Mink  
Paul Ryberg  
Paul Starke  
Paula Wortman  
Pauline Sieverding  
Peggy Harris  
Peter Klein  
Peter Penoyar  
Peter Quinn  
Phoebe Nicholas  
Phuong Do  
Phyllis Tutko  
Piers and Janet Ady  
Prudence Goforth  
Rachel Johnson  
Rachel Smith  
Ramesh Patel  
Rance Burger  
Randy Schwartz  
Randy Ortanez  
Reba Goslee  
Rebecca Foster  
Rebecca Parkin  
Rebekah Stutzman  
Reed Watkins  
Regina Spallone  
Renae Malek  
Richard and Sarah  
Robbins  
Richard Barton  
Richard Crawford  
Richard Gragg  
Richard Helfrich  
Richard LaGala  
Richard Lynas  
Richard Meyer  
Richard Racine  
Richard Rothe  
Richard Ruediger  
Richard Samaniego  
Richard Sanders  
Richard Valentich  
Rickey Barrick  
Rise Schlesinger  
Robert and Karen  
Conroy  
Robert and Lynda Ingram  
Robert Hirsch  
Robert Morris  
Robert Cukla  
Robert Gramss  
Robert Hall  
Robert Johnson

Robert Kapp  
Robert Kelly  
Robert Kuma  
Robert McFarren  
Robert Resnik  
Robert Veghte  
Robert Vogel  
Robert White  
Robert Wynn  
Roberta Reichwein  
Roberto Iraola  
Robin Coarts  
Robin McDaniel  
Roger Day  
Roger Eve  
Roger Russell  
Ronald Davis  
Ronald Hinkle  
Ronald Roski  
Ronald Silverstein  
Ronald Wynne  
Ronan Dowling  
Ronnie Kleiman  
Roseann Gartner  
Rosemary Easley  
Ross and Melissa Bunker  
Ross Cropper  
Rowland New  
Roy Mead  
Russell Mail  
Russell Roegner  
Ruth Ann Kirby  
Ruth Ebisuzaki  
Ruth Golding  
Ruth Hammond  
Ruth Stober  
Rutledge Webb  
Ryan Bauer  
Ryan Blaylock  
Ryan Cox  
Ryan Moore  
Ryna Marinenko  
S.D. Murray  
Salina Atherton  
Sally Cooper  
Sally Sellman  
Sander Zaben  
Sandra Stromnerger  
Sandra Bjork  
Sandra Kagen  
Sandra Nielsen  
Sandra Wenger  
Sandra White  
Sarah Barksdale  
Sarah Hunter  
Sarah Lash  
Scott Hymes  
Scott Stevens  
Sean Samblanet  
Serena Bloom  
Sesseljia Hazzard  
Sharon Swencki  
Sharon Appell  
Sharon Brown  
Sharon Hurley  
Sharon Johnson  
Sharon Kopstein  
Sharon Stack  
Shaun Magnier  
Shauna Kennedy  
Shayla Walker  
Sheldon Hervey  
Shelia Cotter  
Sheryl Kline  
Shirley Brown  
Shirley Diaz  
Shirley Gutberlet  
Shirley Lowe  
Shirley Wizen  
Silas Ayer  
Soma Kumar  
Somphong  
Pathoumthong



Sonia Blumenthal  
Sophie Miller  
Stacey Karydakias  
Stacy Hockett  
Stanley Dapkunas  
Stanley Dolensky  
Stanley Nusenko  
Stephanie Lange  
Stephanie Palarino  
Merther  
Stephanie Weiss  
Stephen Greenstreet  
Stephen Heisel  
Stephen Matalik  
Stephen Williams  
Steve and Tracy Jacobs  
Steven Zemsky  
Steven Phillips  
Stewart Natkin  
Stuart Gordon  
Sue Waterman  
Susan Armiger  
Susan Bode  
Susan Chatfield-Taylor  
Susan Guthrie  
Susan Haitsma  
Susan Ingagliato  
Susan Mako  
Susan Militello  
Susan Powers  
Susan Sayre  
Tammy Rudolph  
Tara Rose  
Tawnya Flores  
Ted Zaleski  
Terry Evangelista  
Thad Rice  
Thangzauva Bawitlung  
The Hess Family  
The Nislow Family  
The Sarken Family, in  
honor of Tom Chesney  
Thelma Allen  
Thelma Passaro  
Theodore Kasckow  
Theodore Lingelbach  
Theresa Femia  
Theresa Giovanelli  
Thomas Cox  
Thomas Francis  
Thomas Hausmann  
Thomas Jones  
Thomas Jurney  
Thomas Kral  
Thomas McGraw  
Thomas Thomas  
Thomas Webb  
Thomasine Cubine  
Tim Chesnutt  
Timothy and Angela  
Habart  
Timothy Brennan  
Timothy McGrath  
Timothy Rothenhoefer  
Tina Carter  
Toby Berman  
Tom Bradford  
Tony Leitzow  
Tracy Jacobs  
Tracey Wells  
Travis Darcy  
Trisga Herold  
Turning Circle  
Valarianne Isaacs  
Vanessa Ishikawa  
Vernon Ruckle  
Vernon Tancil  
Vicki Tuke  
Vicky Broadwater  
Vincent and Gilda  
Salvage  
Virginia Floyd  
Virginia Schaffer  
W.R. Wilkerson  
Walter Beckerman  
Walter Jacobs  
Wayne Smith  
Wellington Brandis  
Wendy Emrich  
Wendy Vanhorn  
William Adams  
William and  
Katherine Byrd  
William Bolton  
William Dunton  
William Francis Rienhoff  
William Kuchta  
William Lanceellotti  
William Maas  
William Miller  
William Preston  
William Rehrmann  
William West  
Yuan Lin and Hung Hsu  
Yvonne Brahms Lovell

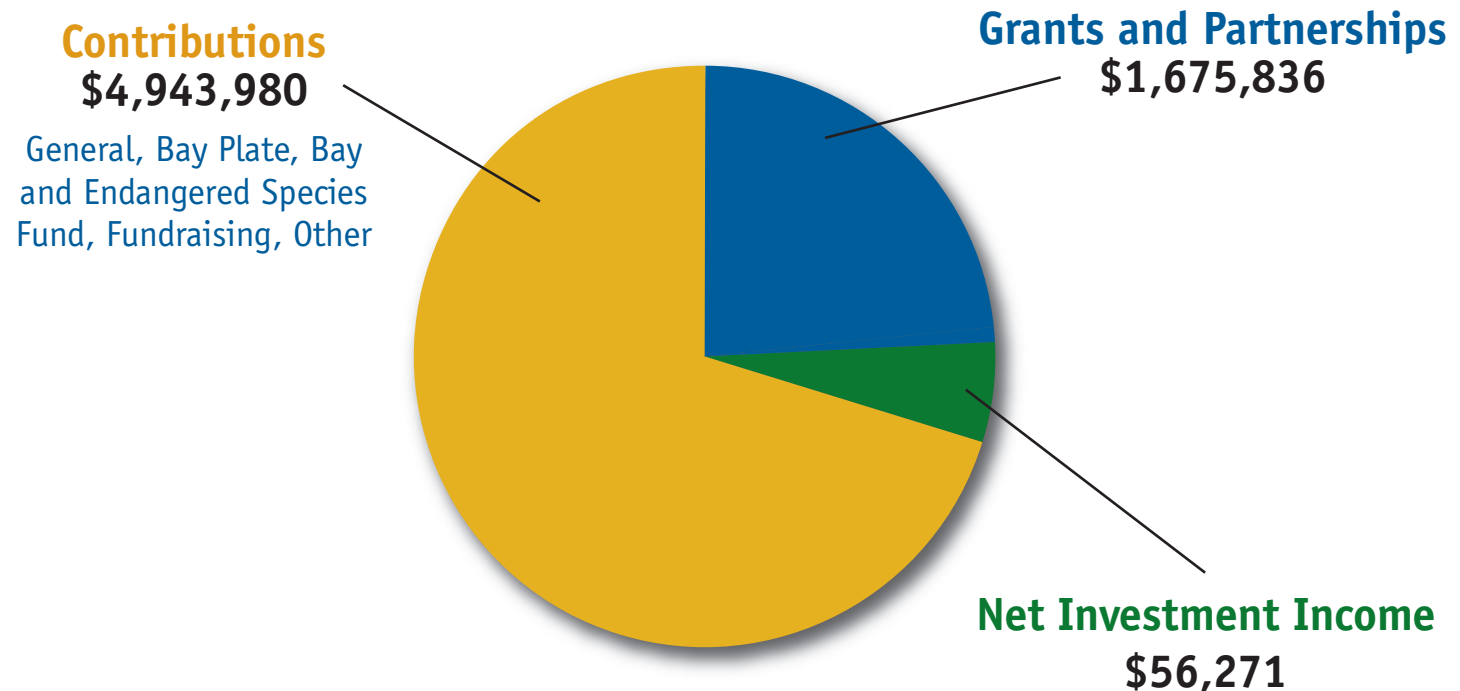
# Fiscal Year 2013 for the Chesapeake Bay Trust

For more information please see the Trust's annual financial statements at [www.cbtrust.org](http://www.cbtrust.org).



For eleven consecutive years, the Chesapeake Bay Trust has received a 4-star rating from Charity Navigator, the nation's leading independent evaluator of non-profit organizations, placing the organization in the top 1% of charities nationwide. According to Charity Navigator evaluators, this ranking, which is the highest available for a nonprofit organization, indicates that Chesapeake Bay Trust outperforms most other charities in America and is committed to sound financial management that is making a difference for the Bay. Ninety cents of every dollar the Trust receives goes directly to support on the ground projects and educational programs. The Trust's full financial statement is available at [www.cbtrust.org](http://www.cbtrust.org).

## FY 2013 SUPPORT AND REVENUE SUMMARY

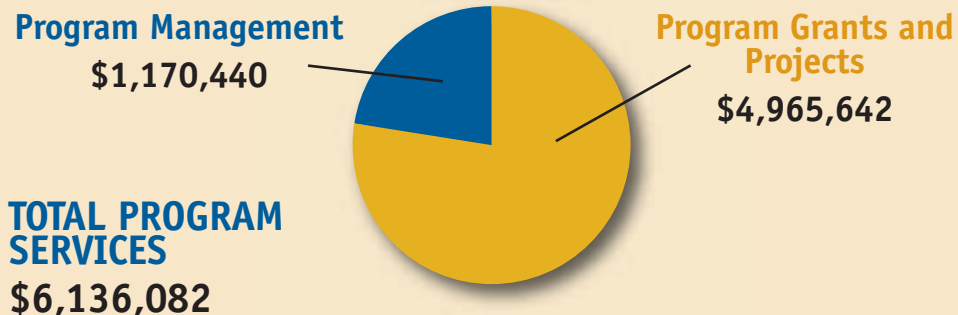


**TOTAL SUPPORT AND REVENUE**  
**\$6,676,087**

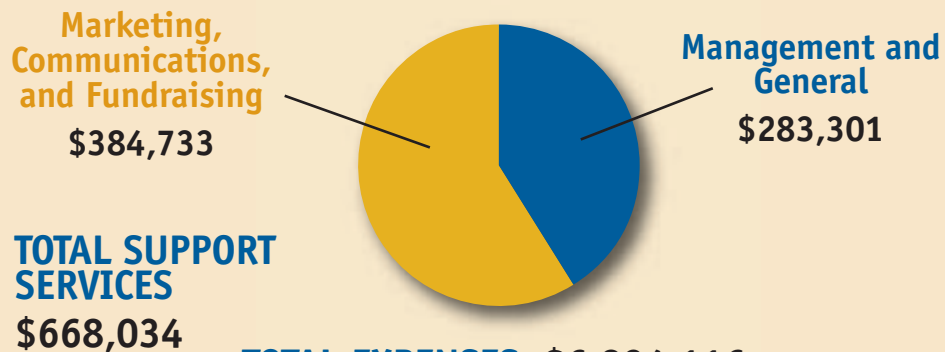


## FY 2013 EXPENSE SUMMARY

### PROGRAM SERVICES

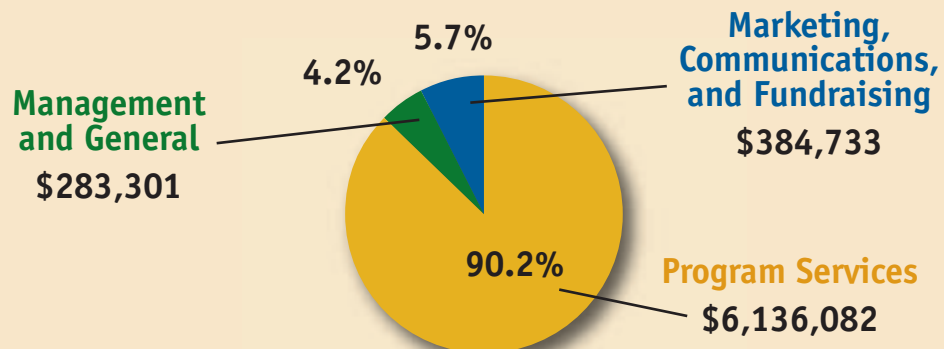


### SUPPORT SERVICES



**TOTAL EXPENSES: \$6,804,116**  
Change in Net Assets: (\$128,029)

### OVERALL EXPENSES



*Thank you for  
your support!*





# Where the Money Comes From:

Maryland's Treasure the Chesapeake  
license plate



Federal, state and  
corporate partnerships



Individual and private  
donations



Chesapeake Bay Fund  
Tax Check-off



# Where the Money Goes:



## Education

Ensuring that students are environmentally literate through K-12 curriculum development, field experiences, and green school development.

## Restoration

Advancing the science and implementation of restoration best management practices that reduce pollution and improve habitat.

## Community Outreach

Engaging citizens and communities to improve the health of local waterways through community clean-ups, tree plantings, and other stewardship practices and projects.

