



MARYLAND

12

MARYLAND

ANNUAL
REPORT
2011-2012

CBTRUST $\frac{11}{12}$

Treasure the Chesapeake



Where the Money Goes When You Support the Chesapeake Bay Trust

EDUCATION

RESTORATION

COMMUNITY OUTREACH



The Chesapeake Bay Trust, as a nonprofit grant-making organization, is dedicated to protecting and restoring the Chesapeake Bay and its rivers in Maryland and throughout the broader Bay watershed. Our goal is to improve our watershed by focusing on three core objectives;

environmental education,
community outreach, and
Bay restoration; and
innovation in each.



Since 1985, the Trust has awarded more than \$50 million in grants to improve local communities and the Chesapeake Bay. We reach more than 120,000 Marylanders each year in every county in Maryland and Baltimore City through our grant programs and special initiatives, in addition to those in other states. Our reason is simple: we believe that getting citizens involved is the key to restoring the Chesapeake Bay.

\$50 million in Grants

Dear Friends of the Chesapeake Bay Trust,



In recent years, as the science of our region's natural resources has advanced, we have come to understand the power and ability that citizens and communities play in the restoration and preservation of our watersheds. The Chesapeake Bay Trust has been proud to nurture this growing capacity. Our job at the Trust is to provide resources that engage citizens in work to restore and protect the local streams, rivers, forests, and other habitats across all of Maryland's watersheds and the broader Chesapeake. We connect individuals to the natural resources in their backyards, increase knowledge about their importance, and provide the tools necessary to restore and protect them.

This past year, in 2012, we once again posted record grant and project awards. We awarded 322 grants to our region's non-profit organizations, community associations, schools, and other groups, offering over \$5.8 million in grants and special initiatives such as the Chesapeake Conservation Corps, environmental education capacity building and training, an urban green jobs research and training project, and more. This level of funding surpasses any other year in the Trust's history.

Our work and the work of our grantees would not be possible without support from many sources, of which the Treasure the Chesapeake license plate program and the Bay Fund income tax check-off program, both created and supported by the Maryland General Assembly, serve as the basis. We leverage these funds with contributions from federal and state partners, corporate and private partners, and individual donors who have increasingly supported programs at the Trust that accomplish common goals. We thank those who represent those sources, including the 400,000 Marylanders who proudly display their Bay plates, and look forward to fruitful partnerships in years to come.

Each year, the Chesapeake Bay Trust board and staff continue to be impressed by the outstanding accomplishments of our grantees and program partners. In 2012, our grantees and Chesapeake Conservation Corps Volunteers engaged almost 34,000 community volunteers who donated over 50,000 hours; educated 83,000 K-12 students using the outdoors as a classroom; hosted over 1,200 events and workshops that educated another 34,000 attendees; and planted almost 180,000 native trees and plants to restore 107 acres of forest buffer, wetlands, and other habitats; and installed another four acres of innovative green infrastructure practices. In addition, the Trust helped the broader Bay restoration community learn about green jobs in the stormwater realm, convened to discuss restoration practices, articulated research-based K-12 environmental education curricula, and advanced the social science behind engaging individuals in voluntary actions to aid our watersheds.

I want to thank all our partners, grantees, funders, and technical experts for their hard work and tireless support this past year. I hope this year's annual report provides a glimpse into the amazing work that has been accomplished by them, and by the Chesapeake Bay Trust, during this past year.

Sincerely,

Jana Davis, Ph.D.
Executive Director
Chesapeake Bay Trust



PLANTS:

Planted 179,697 native trees and plants.

179,697

STUDENTS:

Engaged 83,688 students in outdoor field experiences.



83,688

TEACHERS:

4,688 teachers taught students about their environment and the Chesapeake Bay.

4,688



STORMWATER:

Planted more than 4 acres of rain gardens and distributed 642 rain barrels.



SHORELINE:

Created 6,320 linear feet of living shoreline.



VOLUNTEERS:

33,878

Engaged 33,878 citizens who volunteered 51,337 hours to clean up local neighborhoods, the Bay and its rivers.



TRASH:

Removed 70 tons of trash and 5 acres of invasive species from streams and rivers.

70

HABITAT:

Restored 44 acres of streamside buffers and precious wetlands.





Board of Trustees

Tara Potter
Verizon (ret.)
Chair of the Board of Trustees

Honorable John Astle
Maryland State Senate

Torrey C. Brown, M.D.
Intralytix, Inc.

Stuart A. Clarke
Town Creek Foundation

Honorable Valerie Ervin
Montgomery County Council

J. Matthew Gambrill, Esq.
Calvert Marina

Joseph Gill
Maryland Department of
Natural Resources

W. Warren Hamel, Esq.
Venable, LLP

F. Carter Heim, CPA
HeimLantz

Virginia Kearney
Maryland Department of
the Environment

Louise Lawrence
Maryland Department of Agriculture

Steve Linhard
St. Mary's School & Parish

Honorable Adam Ortiz
Office of the Prince George's County
Executive

Dr. Margaret Palmer
National Socio-Environmental
Synthesis Center

Honorable Shane Robinson
Maryland House of Delegates

Terence Smith
Journalist

Scot T. Spencer
The Annie E. Casey Foundation

Benjamin Wechsler
Linowes and Blocher LLP

Emeritus Trustees

Governor Harry R. Hughes
Martin H. Poretsky



Staff

Executive Office

Jana Davis, Ph.D.
Executive Director

Finance and Administration

Steve Russo
*Director of Finance
& Administration*

Heather Adams
Office Manager

Grant Managers and Technical Assistance

Jeffrey Lerner
Director of Programs & Partnerships

Jamie Baxter
Program Director

Jen Wijetunga
Senior Program Officer

Hieu Truong
Program Officer

Kacey Wetzel
Program Officer

Tara Baker
Program Coordinator

Communications & Development

Molly Alton Mullins
*Director of Communications
& Development*

Kristin Foringer
*Communications & Development
Manager*

Chesapeake Bay Funders Network

Amy Burdette
Coordinator

Trust Volunteers

Throughout the year many talented and knowledgeable individuals have lent their expertise to the Trust and also volunteered for partner events. We are truly thankful for their assistance.

Abby Grebasch	Katy Phelps
Abby Hancock	Kelsey Hallowell
Amanda Bassow	Ken Hendrickson
Anita Kraemer	Kenneth Hendrickson
Audrey DeGregorio	Kevin Shabow
Beth McGee	Kevin Smith
Bhaskar Subramanian	Kristen Fleming
Brenda Louie	Kristin Pauly
Brent McCloskey	Lamar Lewis
Brian Day	Larissa J. Graham
Britt Slattery	Larry Brown
Brittany Smith	Laura Connelly
Bryan Seipp	Lee Ann Hutchison
Carol Wong	Liana Pipitone
Carolyn Steinberg	Lindsay Eney
Carrie Roble	Lise Soukup
Cathy Brill	Liz Van Dolah
Chris Aadland	Louise Lawrence
Chris Maex	Mandy Chesnutt
Chuck Henney	Marcus Griswold
Colleen Zarek	Margaret Palmer
Dan Nees	Marian Honecny
Daphne Pee	Marie Moll-Amego
David Hwang	Mary Andrews
Debra Weller	Matthew Fleming
Denise Rigney	Meghan Kelly
Dominique Luekenhoff	Meredith Lathbury Girard
Donna Clem	Mike Pfefferle
Elena Takaki	Pete Bsumek
Elizabeth Rice	Peter Hill
Elle O'Brien	Dr. Poornima Madhavan
Erin Ling	R. John Dawes
Erin Tush McArdle	Rich Lefebure
Gary Heath	Rich Takacs
Gary Hedges	Rick Ayella
Ginny Kearney	Robert Burg
Gwen Johnson	Sally Claggett
Heather Forsyth	Sam Stokes
Heather Jentile	Samuel Little
Jake Reilly	Sarah Bodor
Jeff Blass	Sarah Boynton
Jennifer McDaniel	Sarah Haines
Jennifer Raulin	Sarah Lane
Jennifer Carr	Sean McGuire
Jessica Vasas	Shannon Sprague
Joe Arrowsmith	Sophie Foscoe
John Moss	Stacy Bond
John Papagni	Stephanie Westby
John Rhoderick	Dr. Steve Jacob
Josh McGrath	Stuart Clarke
Judy Preston	Stuart Echols
Julie Ayers	Susan McDowell
Julie Diegez	Tara Potter
Julie Hester	Tom Pilholski
Julie Winters	Verna Harrison
Justin Haynes	Victor Ukpolo
Kanishka Wijetunga	Victoria Carrasco
Kate Boicourt	Virginia Witmer
Katherine Register	Walter Priest



In January 2012, the Trust held its Annual Legislative Reception and Awards program in the Miller Senate Office Building in Annapolis. In total, more than 150 legislators, grantees and Bay supporters attended to honor these exceptional individuals and their contributions to environmental education, community outreach and Bay restoration.

The Chesapeake Bay Trust celebrates its 2012 Annual Awards Program winners.



Award winner Robert Gallagher with Delegate Ron George.

2012 Teacher of the Year Award: Erol Miller

Northwood High School,
Montgomery County

One of awardee Erol Miller's many accomplishments was the creation of the Northwood Chesapeake Bay Trail, a new environmental outdoor classroom and community green space located in Montgomery County. This project included the removal of over 11,000 pounds of trash, the clearing of invasive species and the installation of educational materials. His award included \$2,500 for his school to continue its innovative work.

2012 Student of the Year Scholarship: Solon Snider

Severna Park High School,
Anne Arundel County

Solon Snider, the recipient of the Trust's \$5,000 Student of the Year scholarship, helped develop a successful recycling program at his school and led the charge for Severna Park to be named a Maryland Green School. Snider is an active member of the Chesapeake Regional Association of Student Councils and also served as co-chairman of the Environmental and Community Action Committee.

2012 Honorable Arthur Dorman Scholarship: Natalie Oliver

Bladensburg High School,
Prince George's County

Recognizing a Maryland student for promoting diversity, the Trust's \$5,000 Honorable Arthur Dorman Scholarship was presented to Natalie Oliver. Oliver's environmental passion has been shaped by her science curriculum at school, her membership in the Port Towns Youth Council, and her volunteer hours with the Anacostia Watershed Society. As a volunteer, Oliver has been responsible for removing countless pounds of trash and invasive species from the Anacostia, as well as managing tree maintenance in her urban watershed.

2012 Melanie Teems Award: C.A.R.E. Community Association

Baltimore City

The C.A.R.E. Community Association was honored for its outreach and community engagement work to improve east Baltimore City. With grant support from the Trust, C.A.R.E. was able to implement a trash removal and mural painting project that connected residents to their local watershed while also reducing illegal dumping.

2012 Dr. Torrey Brown Award: Maryland Senate President Thomas V. Mike Miller, Jr.

In 2012 the Trust honored Maryland Senate President Thomas V. Mike Miller, Jr., for his Chesapeake Bay efforts and community leadership. In 2010, President Miller spearheaded the creation of the Chesapeake Conservation Corps, a program led by the Trust that provides career and leadership training for young people interested in environmental careers and Chesapeake Bay watershed protection.



Senate President Mike Miller addresses the evening's attendees.

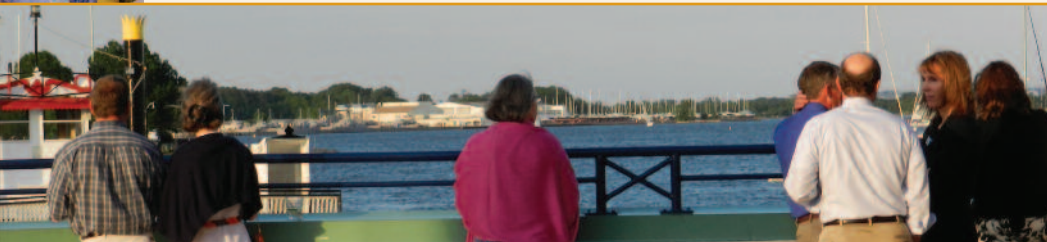
2012 Ellen Fraites Wagner Award: Robert Gallagher

West/Rhode Riverkeeper,
Anne Arundel County

As the founder of the West/Rhode Riverkeeper, Robert Gallagher has engaged and empowered countless local communities and residents through his outreach work and volunteer programs. Recently he helped found the Anne Arundel County Chapter of the League of Conservation Voters and is a known advocate for Bay conservation issues. He is well respected within the environmental community, and has been integral in efforts to organize residents to support conservation goals.



Events: 14th Annual Treasure the Chesapeake Celebration & 1st Annual 5K for the Bay



On May 18, 2012, the Chesapeake Bay Trust hosted its 14th Annual Treasure the Chesapeake Celebration at the Marriott Waterfront hotel in Annapolis.

More than 250 Trust grantees, sponsors and new supporters gathered to recognize the incredible work of the Chesapeake Bay Trust and its grantees. During the event, the Trust also honored longtime board member Senator John Astle for his efforts on behalf of the Chesapeake Bay Trust and the preservation of the Treasure the Chesapeake license plate program. In total, the 14th Annual Treasure the Chesapeake



Celebration raised more than \$60,000 to fund environmental education, community engagement and Bay restoration projects throughout Maryland.



Senator John Astle and his wife Jayne are honored at this year's Treasure the Chesapeake Celebration.

The Trust would like to extend its sincerest gratitude to its premier sponsors Constellation Energy, M&T Bank, the Great Chesapeake Bay Swim, Venable and Wheelabrator Baltimore.



New! 1st Annual 5K for the Bay a Great Success!



Quiet Waters Park
Annapolis, MD

On Saturday, June 16, the Chesapeake Bay Trust hosted its first-ever 5K for the Bay at Quiet Waters Park in Annapolis. Almost 300 runners and walkers joined the Trust for this 3.1 mile run/walk with proceeds benefitting Chesapeake Bay restoration and educational programs. Special thanks to all runners who came out to join the Trust, as well as the organizations that supported this year's inaugural race, including the Chesapeake Bay Roasting Company, Panera Bread,



Runners smile after completing the 1st ever 5K for the Bay

MotoACTV, eCruisers, Fleet Feet Sports Annapolis, Annapolis Irish Festival, 103 WRNR, G&G Outfitters, the Bowie Baysox and JEB Design.





More than Grant Making: Trust provides Technical Assistance and Leadership in the Bay Community

In recent years, the Trust has been called upon to serve more than just a grant-making role in the natural resource community of Maryland and other Chesapeake watershed states. We have identified key needs, matched them up with the strong technical skills of our staff, and now offer technical assistance in certain strategic areas. In this way, we can break through some of the barriers and continue to advance watershed restoration and protection.

Developing an Environmentally Literate K-12 Student Body

For the past four years, the Trust has been a key collaborator in Maryland's Children in Nature Partnership, an initiative launched by Governor Martin O'Malley to provide Maryland students with knowledge of and a connection with the natural environment. Last year, the Maryland State Board of Education adopted the first ever environmental literacy graduation requirement in the nation. This year, the Trust helped develop the strategy for providing outdoor experiences for all Maryland students and helped draft environmental literacy standards. We continue to work with our NOAA partners, and our new EPA Office of Education partner, to convene curriculum, evaluation, and other experts to develop best practices in K-12 environmental education.



Advancing New Techniques to Accomplish Behavior Change

The Trust's primary goal is to engage citizens in watershed restoration and protection efforts. But how? The social science of how to engage citizens in a way that changes behavior is advancing every day, and the Trust is on the forefront of this new field. We are infusing social marketing principles into our grant programs to promote social marketing and behavior change models as a framework. In addition, we have offered training to our grantees who wish to base their outreach and awareness programs upon this new outcomes-based framework. Through this effort, the Trust is becoming a leader in behavior change social marketing.

Increasing Capacity for Larger-Scale Restoration

As Chesapeake Bay restoration advances, the Trust has embarked upon two programs designed to help organizations develop advanced capacity to be key partners. The first, our Capacity Building program in which the National Fish and Wildlife Foundation, Town Creek Foundation, and other members of the Chesapeake Bay Funders Network have partnered with the Trust, provides training and other resources to help organizations increase their ability to play a significant role in coordinated restoration efforts.

In the second program, the Trust has played a role in developing and managing construction of larger-scale restoration projects funded through the EPA and Maryland Department of the Environment's State Revolving Loan Fund program. The Trust was chosen by MDE to work on three of these projects, and in 2012, managed a \$740,000 living shoreline at the Smithsonian Environmental Research Center (co-funded by NOAA) with a local partner, a \$120,000 stormwater wetland project at the YMCA Camp Letts with the West/Rhode Riverkeeper, and a \$900,000 stream restoration project with the South River Federation.

Stormwater, Green Infrastructure and Green Jobs: Identifying Potential, Developing Training, and Implementing Practices

Changes in Bay restoration processes will likely provide expanded opportunities for for-profit entities engaged in water quality work. Some have asked whether companies that specialize in restoration, landscaping, engineering, and building recognize the opportunities and challenges, have the existing capacity to meet demand, and plan to adjust or train staff accordingly. In 2012, the Trust, with



funding partners U.S. Department of Labor and the EPA, and programmatic partners Center for Watershed Protection and Anne Arundel Community College's Center for Workforce Solutions, embarked on three exercises. First, we surveyed for-profit entities in key industries to document the new need for staff trained in stormwater green infrastructure. Second, based on the outcomes, we developed and piloted a short-term training program. Third, we funded grants for the second year with our EPA partners through the Green Streets, Green Jobs, Green Towns program, which seeks to implement green infrastructure practices and provide opportunities for local green job employment.



WESTERN MARYLAND

- Allegany: \$208,059
- Carroll: \$59,463
- Frederick: \$26,044
- Garrett: \$12,650
- Washington: \$108,085



CENTRAL MARYLAND

- Baltimore: \$378,869
- Baltimore City: \$566,029
- Harford: \$58,765
- Howard: \$52,753
- Montgomery: \$216,559



SOUTHERN MARYLAND

- Anne Arundel: \$613,962
- Calvert: \$28,616
- St. Mary's: \$112,958
- Charles: \$12,874
- Prince George's: \$222,888



EASTERN SHORE

- Caroline: \$67,955
- Cecil: \$155,751
- Kent: \$190,599
- Queen Anne's: \$230,023
- Talbot: \$143,928
- Dorchester: \$119,053
- Somerset: \$449
- Wicomico: \$97,681
- Worcester: \$64,157



With Partner Support:

- PENNSYLVANIA: \$80,000
- VIRGINIA: \$545,569
- WEST VIRGINIA: \$45,000
- DELAWARE: \$20,000
- WASHINGTON, DC: \$47,950



WATERSHED WIDE: \$1,325,522



EDUCATION

Ensuring that students are environmentally literate through K-12 curriculum development, field experiences, and green school development.



RESTORATION

Advancing the science and implementation of restoration best management practices that reduce pollution and improve habitat.

MINI GRANT PROGRAM

**154 projects awarded
for \$394,242 in grants**



The Chesapeake Bay Trust Mini Grant Program receives the most requests in the Trust's portfolio, with over 200 grants awarded this year alone. This program awards up to \$5,000 to support activities at schools and non-profit organizations that help promote awareness and participation in the restoration and protection of the Chesapeake Bay and its tributaries.

**4,688 teachers
reached**

COMMUNITY OUTREACH

Engaging citizens and communities to improve the health of local waterways through community clean-ups, tree plantings and other stewardship practices and projects.

33,878 Volunteers Engaged

OUTREACH AND COMMUNITY ENGAGEMENT GRANT PROGRAM

**24 projects awarded for
\$405,840 in grants**

Through its Outreach and Community Engagement Grant Program, the Trust seeks to increase individual and community stewardship through efforts that build ownership of local watersheds and engage individuals in stewardship practices and projects that benefit the Bay. This year the Trust also created a Behavior Change track within this grant program to promote social marketing models that actually seek to modify individual and community behaviors.





83,688 Students Engaged



ENVIRONMENTAL EDUCATION GRANT PROGRAM

13 projects awarded for \$430,160 in grants

The Trust's Environmental Education Grant Program seeks to increase environmental stewardship by providing grants that build and expand K-12 environmental education programs and increase student access to outdoor learning experiences. Just last year Maryland became the first state in the nation to enact an environmental literacy requirement so that all Maryland students graduate with knowledge of, and a connection to, their natural world.

RESTORATION GRANT PROGRAM

21 projects awarded for \$463,343 in grants

**179,697
native plants
and trees
planted**

The Trust's Restoration Grant Program was established to provide grants to organizations and agencies for community-based restoration projects that work to restore and protect the Chesapeake Bay and its rivers. Through this program, the Trust seeks to fund restoration projects that provide measurable ecological results and also serve as community-based demonstration projects.

GREEN STREETS-GREEN JOBS-GREEN TOWNS GRANT PROGRAM

10 projects awarded for \$376,000 in grants



**4
acres of green
infrastructure
practices created**

The Green Streets-Green Jobs-Green Towns Grant Program is made possible in partnership with the Chesapeake Bay Trust, U.S. Environmental Protection Agency, Maryland Department of the Environment, and Maryland Department of Natural Resources. This collaborative effort seeks to advance watershed protection, community livability, and economic vitality throughout the watershed through the development of stormwater management techniques, green jobs creation and enhanced resident livability.

COMMUNITY GREENING GRANT PROGRAM

**Nine projects
awarded
\$210,336
in grants**

The Trust's Community Greening Grant Program provides funding for on-the-ground restoration work and other activities that support greening and tree canopy programs in Maryland's urban and suburban communities. "Greening" plans increase forest canopy, reduce stormwater runoff, improve air quality, and enhance the quality of life in urban areas.



**70 tons
of trash
removed**

WATERSHED ASSISTANCE GRANT PROGRAM

The Watershed Assistance Grant Program is designed to support watershed planning and the design of watershed restoration and protection projects in Maryland. In partnership with the Maryland Department of Natural Resources, this program provides funding for planning and design assistance associated with protection and restoration programs and projects that lead to improved water quality in the Maryland portion of the Chesapeake Bay watershed and the Maryland Coastal Bays.

This program is made possible through partnership with the Maryland Department of Natural Resources

**14 projects awarded
\$359,000
in grants**



**44 acres
of wetlands and
streamside buffers**

LIVING SHORELINES GRANT PROGRAM

**16 projects awarded for
\$810,350 in grants**

The Chesapeake Bay Trust, in conjunction with the National Oceanic and Atmospheric Administration Restoration Center, and Maryland's Departments of the Environment and Natural Resources, created this grant initiative to reverse the trend of shoreline hardening by encouraging the creation of living shoreline restoration projects and by enhancing public awareness about the benefits of living shorelines. Through this grant program partnership, the Trust has created 28,000 linear feet of living shoreline and 18 acres of wetland habitat during the past seven years.

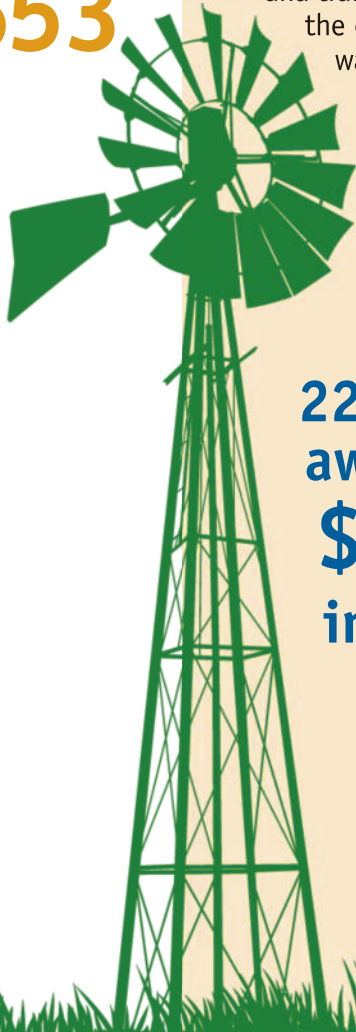
\$810,350



AGRICULTURE INITIATIVE

Two grants awarded for \$143,553 in funding

In partnership with the Chesapeake Bay Funders Network, the Chesapeake Bay Trust's Agricultural Initiative seeks to strengthen the economic sustainability of the Chesapeake Bay farming community and improve the health of rivers and streams that feed into the Bay.



CAPACITY BUILDING INITIATIVE

The Capacity Building Initiative is a three year program that provides assistance to organizations in the form of grants, technical assistance, and training in order to enhance the effectiveness of watershed organizations by increasing their power to advance local watershed protection priorities through collaborative strategies.

22 grants awarded for \$671,000 in funding

PIONEER GRANT PROGRAM

Three grants awarded for \$299,900 in funding

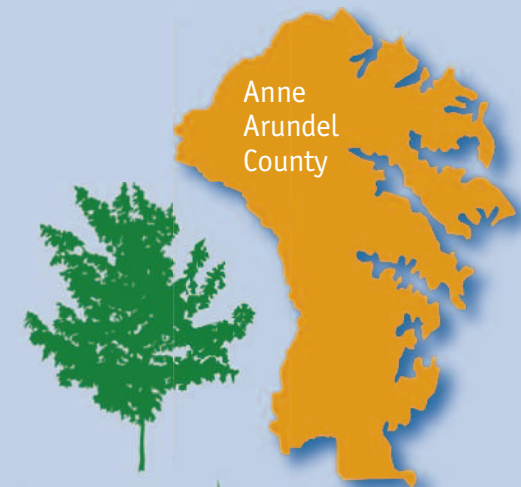
The goal of the Pioneer Grant Program is to encourage innovation while supporting practitioners to develop or advance ideas and projects that will result in increased best management practices to accomplish water quality benefits in local streams, rivers, and ultimately the Chesapeake Bay. In 2012, three innovative grants addressed new technologies for phosphorus removal from dairy manure, nutrient benefits of detention ponds conversion to wetlands, and fertilizer application in non-agricultural landscapes.



ANNE ARUNDEL COUNTY COMMUNITY TREE PLANTING MINI GRANT PROGRAM

Three grants awarded for \$2,500 in funding

The Anne Arundel County Forest Conservancy District Board and the Chesapeake Bay Trust announced a new partnership this past year to provide small grants under \$1,000 to help communities and organizations increase the number of trees and tree canopy in neighborhoods, parks, and their local communities throughout Anne Arundel County.



Chesapeake Conservation Corps Expands in 2012



Started in 2010, the Chesapeake Conservation Corps is a program that provides career and leadership training for young people interested in environmental careers and watershed protection.



This initiative, established by the Maryland Legislature and spearheaded by Senate President Mike Miller, matches young people, ages 18-25, with organizations throughout the state for



Senate President Mike Miller, Congressman John Sarbanes, and others from the Maryland General Assembly welcome this year's Chesapeake Conservation Corps class.

stipend-supported, one-year terms of service. In its inaugural year, 16 Corps Volunteers worked on a variety of environmental initiatives and due to the success of the program, the Corps expanded in 2012 to include 21 participants, who gained valuable work experience with local groups. In turn, non-profits and government organizations received resources beyond grants, which increased their capacity and overall effectiveness.

The third year of the program, which began in August 2012, expanded to a class of 26 exceptional young people who will serve at Maryland watershed organizations, county governments, and other nonprofits for the next year.

Providing Jobs in Maryland

Since the program's inception, almost 30 percent of previous Corps participants have been hired by their host organizations, most in newly created positions, thus providing sustained employment for young people in Maryland and capacity building for host organizations. Furthermore, retention rate of Corps Volunteers in the program has been 100 percent since it began in 2010.

Project Support and Grant Writing

As a part of the program, each Conservation Corps participant has the opportunity to apply for a mini grant from the Trust for up to \$1,000. This enables Corps members to manage a restoration, outreach or education project as well as gain valuable job training skills in grant writing, budget development and project management.



*Thank you Class
of 2012*

Patrick Bond, Parks and People Foundation;
Stacy Bond, Maryland Association for
Environmental and Outdoor Education;
Erin Bowman, Reservoir Hill Improvement
Council; Braeden Bumpers, Friends of Rock
Creek's Environment; Kristin Buter, Phillips
Wharf Education Center; Laura Cattell,
National Aquarium in Baltimore; Dietrich
Epp-Schmidt, Eco City Farms; Taren Evans,
American Chestnut Land Trust; Stephanie
Fischer, Maryland Department of Natural
Resources; Ileana Freytes, Casa de Maryland;
Kosoko Jackson, Arlington Echo Outdoor
Education Center; Concetta Laskey, Calvert
Marine Museum and CHEARS; Racheal
Patrice, Habitat for Humanity Choptank;
James Phillips, Anacostia Watershed Society;
Joseph Ports, West/Rhode Riverkeeper;
Allison Rich, Baltimore City Public Schools;
Nicole Robinson, Frederick County Office
of Environmental Sustainability; Lea Rubin,
Chesapeake Bay Foundation; Wesley Tse,
Eastern Shore Land Conservancy; Zoe Unruh,
Montgomery County Public Schools;
Carol Wong, South River Federation

Special thanks to Maryland's
Department of Natural Resources
and Constellation Energy
for contributing to the funding
of this program.





Treasure the Chesapeake License Plate



Last year more than 46,000 Marylanders showed their love and commitment for the Chesapeake Bay by purchasing Treasure the Chesapeake license plates. These license plates only cost \$20, but these funds add up



to the largest source of revenue for the Chesapeake Bay

Trust. For every \$20 plate purchased, the Trust can plant two trees, remove 10 pounds of trash, or fund an outdoor field experience for two Maryland students. Without the support of so many Marylanders through the Bay plate, the Trust would not be able to accomplish so much for the Bay and local Maryland communities.

The Trust also thanks the Maryland Motor Vehicle Administration for their exceptional

support of the Bay plate program and our efforts to inform Marylanders about what the Treasure the Chesapeake license plate funds in their own community. In 2012, the Trust worked with MVA to provide informational materials about Bay plates via online registration renewals, mailed inserts, MVA's website and in branches directly throughout the state. For more information and to order a Bay plate online, visit bayplate.org.



Individual Donations

In 2012, the Trust continued to expand its direct donor outreach efforts in order to meet the ever-expanding demand for grants. During the course of the year, 1160 individual Chesapeake Bay supporters donated almost \$109,000 in support of environmental education, community outreach and Bay restoration.



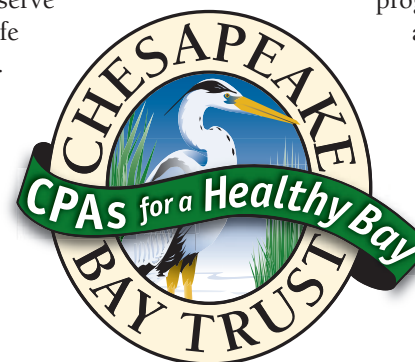
Bay Fund Tax Check-off

Last year more than \$1.1 million was contributed through the Chesapeake Bay and Endangered Species Fund, a donation program created to support restoration and to protect Maryland's endangered species. This fund, which is split evenly between the Trust and the Maryland Department of Natural Resources, allows Marylanders to donate through their tax return to help the Bay and conserve Maryland's native wildlife and endangered species. Launched in 1990, the Chesapeake Bay and Endangered Species Fund is one of the most successful voluntary tax check-off programs in the nation. In fiscal year 2012, almost 37,000 Maryland state income tax statements were returned with contributions to the fund, which



averaged \$28.19 per donation. Donations of any amount can be made and all are tax deductible the following year.

In 2012, the Trust also launched "CPAs for a Healthy Bay," a new program designed to encourage CPAs and other tax professionals to raise awareness about the check-off. In total, 23 CPA firms signed up for the program in the first year and mailed over 7,000 inserts about the Bay fund to their clients. Next year the Trust hopes to expand this program to reach more Marylanders to educate them about this voluntary mechanism to help the Chesapeake Bay.



BUSINESS PARTNERS

Each year the Chesapeake Bay Trust partners with numerous businesses to raise funds and awareness to help restore and protect the Chesapeake Bay and its rivers.

- Annapolis Irish Festival
- BayLand Consultants & Designers
- Bowie Baysox
- Brian Bays Insurance
- By the Bay Botanicals
- Calvert Marina
- Chaney Enterprises
- Constellation Energy
- Diageo Chateau & Estate Wines Company
- Eddie Bauer
- Groupon Grassroots
- Harvest Beer Festival
- Herrington on the Bay
- Imbrium Systems
- M&T Bank
- North Sails America
- OpinionWorks
- Rams Head Promotions
- Reliable Churchill
- Silopanna Music Festival
- Shoreline Design
- Storage Village
- Venable
- Verizon
- Wheelabrator Baltimore
- Whole Foods



FEDERAL, STATE AND LOCAL AGENCY PARTNERS



The Trust collaborates with a host of federal, state and local agencies on its grant programs and specific initiatives to support restoration and outreach programs.

- National Oceanic and Atmospheric Administration (NOAA) Restoration Center
- National Oceanic and Atmospheric Administration (NOAA) Chesapeake Bay Office
- U.S. Environmental Protection Agency Region 3
- U.S. Environmental Protection Agency Chesapeake Bay Program
- U.S. Department of Labor
- U.S. Fish and Wildlife Service
- Smithsonian Environmental Research Center
- Comptroller Office of Maryland
- Maryland Department of Agriculture
- Maryland Department of the Environment
- Maryland Department of Natural Resources
- Maryland Motor Vehicle Administration
- Maryland State Department of Education
- Anne Arundel County Forestry Board

FOUNDATION AND NONPROFIT PARTNERS

Numerous foundation and nonprofit partners offer their funding and expertise to raise awareness and further our shared mission of enhancing Bay stewardship.

- Agua Fund, Inc.
- Biophilia Foundation
- blue moon fund
- Bunting Family Foundation
- Corina Higginson Trust
- FishAmerica Foundation
- Foundation for Pennsylvania Watersheds
- Maryland Association of CPAs
- MARPAT Foundation
- Nabit Foundation/Great Chesapeake Bay Swim
- National Fish and Wildlife Foundation
- Oyster Recovery Partnership
- Prince Charitable Trusts
- Rauch Foundation
- Shared Earth Foundation
- Singing Field Foundation
- The Abell Foundation
- The Curtis and Edith Munson Foundation
- The Keith Campbell Foundation for the Environment
- The Morris & Gwendolyn Cafritz Foundation
- The Summit Fund of Washington
- Town Creek Foundation
- Virginia Environmental Endowment
- William Penn Foundation



The Chesapeake Bay Funders Network is a funding collaborative dedicated to improving the capacity within communities to initiate and sustain change to promote a healthier Chesapeake Bay. Founded in 2003, the CBFN provides opportunities for grantmakers, including the Chesapeake Bay Trust, to network and exchange information while developing shared strategies for the protection and restoration of the Chesapeake Bay, and the waters, lands, and communities of the broader watershed.





Over \$300,000

Chesapeake Bay and Endangered Species
Fund Tax Check-off Contributors
Maryland Bay Plate Owners
Maryland Department of Natural
Resources
Maryland Department of the
Environment
National Oceanic and Atmospheric
Administration
National Fish and Wildlife Foundation

\$100,000-\$299,999

Town Creek Foundation

\$25,000 - \$99,999

Agua Fund, Inc.
Anonymous
blue moon fund, Inc.
Constellation Energy
Curtis & Edith Munson Foundation
Earth Resources Technology
Frederick H. Prince Testamentary Trust
Keith Campbell Foundation for the
Environment
Marpat Foundation
Morris and Gwendolyn Cafritz
Foundation
Rauch Foundation
U.S. Department of Labor
U.S. Fish and Wildlife Service

\$10,000-\$24,999

Community Foundation for the
Alleghenies

\$5,000-\$9,999

Cooper Thomas
Doppelt Family Foundation
Frank M. Ewing Foundation
Great Chesapeake Bay Swim/
Nabit Foundation
M&T Bank
Summit Fund of Washington
Venable Foundation, Inc.
Wheelabrator Baltimore

\$2,500-\$4,999

Anne Arundel County Forestry Board
Ernest Maier, Inc./PaveDrain
Groupon Grassroots
Michael and Jennifer Wargo
Shelby Brewer

\$1,000-\$2,499

Anonymous
Bowie Baysox
Chesapeake Bay Foundation
Christian Crowley
Jennifer Schorr
Joshua Whatley
Judith and Edwin Cohen Foundation
Leslie Lake
Linowes and Blocher LLP
Matt Gambrell/Calvert Marina
Matthew Earl
OpinionWorks

Robert Ginsburg
Shared Earth Foundation
Shoreline Design, LLC
Straughan Environmental, Inc.
Tara Potter
The Hatcher Group
The MHE Foundation
Warren Hamel
William and Corrine Irwin

\$500 - \$999

Andrew Snope
Anthony Brudis & Associates, Inc.
Association of Maryland Pilots
Bay Deeja's
Catherine Bye
Chaney Enterprises
Dan and Amy Clements
David and Judy Bonior
Elizabeth Krentzman
Frank and Jane Otero
Friends of Valerie Ervin
Jake Reilly
Jason Wilson
Joseph Gill
Kathy Souder
Mary-Scott Kaiser
Michael A. and Holly C. McFarland
Midshore River Conservancy, Inc.
National Geographic Society
Paul Bonham
Richard and Alice Isaacman
Scott and Karen Koppa
Shannon Downey
The Henry Foundation
Weitzman Agency

\$250 - \$499

Al and Vicki Saxon
Allen Hance
Amy Schirmer
Anacostia Watershed Society
Anna Willman
Barbara Stuart and Ralph Robinson
BCC & Associates
Biohabitats, Inc.
Bruce Downey
Center for Watershed Protection, Inc.
Chesapeake Covenant Community
Chesapeake Legal Alliance
Chester River Association
Claudia Burns
Darlene Bookoff
Edwin Richardson
Elwyn Jordan
Evergreen Heritage Center Foundation
Fredric Pement
Glenn Pfadenhauer
Gunpowder Valley Conservancy
Herrington on the Bay
James Wetzel
Jana Davis
Jeanne Clarke
Jerome Acks
Jill Rose
John and Fran Flanigan
Friends of John Astle
John & Ann Curley
Joy Naquin
Laurie Jenkins
Leslie Derr
Living Classrooms Foundation
MAEOE
Martin Poretsky



\$250 - \$499 (continued)

Maryland Environmental Service
McMurphy Productions
Michael Heffner
Michelle Nicoll
Nanticoke Watershed Alliance
Parks and People Foundation
Paul and Mary Foringer
Paul Barrett
Port Tobacco River Conservancy
Priscilla Cooper
Rebecca Chasan
Reliable Churchill
Richard Howe/AXIOM Systems
Rita Torres
Robert Book
Sarah Mallonga
Spa Creek Conservancy
Stanley Nowak
Steve Linhard
Steven Russo
STSG, Inc.
Susan Severo
Terence Smith
Towson University STEM
Education Center
Touchstone Behavioral Health
Victoria Timian
Virginia Kearney

\$1-\$249

Adam Panarese
Adele Gabrielli
Adele Hess
Ahni Vanek
Alan Ward
Alan Wojtalik
Albert Bongiovi
Albert Irion
Alberta Magzarian
Aleta Meyer
Alfred and Georgiana Evans
Alice Ferguson Foundation
Alice Hance
Alicia Bickoff
Alicia Dixon
Alicia Pimental
Aline Martinez
Alison Hatch
Allan and Ilene Blumberg
Allen Bogert
Allen Wiener
Allison Durell
Alvin and Harriet Shapiro
Amanda Bania
Amanda Mock
Amanda Strong
Amet Figueroa
Amit Sinha
Amy Dhillon
Amy Guard
Amy Krumbein
Amy Lane
Amy Orndorff
Andrea Berna
Andrew Beaulieu
Andrew Wedemyer
Anelia Slavoff
Angela Barnes
Angela Rinaudo
Angie Voll
Ann Baun
Ann Harris
Ann Jackson
Ann W. Fisher
Anna Haneke
Anna Plitt
Anna Smith
Anna Willman
Anne Boyer
Anne Dellinger
Anne Louise Heald
Anne Mortenson

Annetta Saunders
Annie Gehringer
Annie Pike
Anthony Aversa
Anthony Moscato, Jr.
Antoinett Miller
Antoinette Sykes
Anton Hooper
Arlene Woods
Arnold Sanders
Arthur Bunnell
Arthur Latchaw
Ashleigh Korves
Ashley Hibshman
Augusta Hunt
Ayanna Gaines
B.D. McDermott
B.J. Rowlett, Jr.
Baird Straughan
Barbara Burst
Barbara Cronin
Barbara Falkinburg
Barbara Golding
Barbara Goss
Barbara Hamil
Barbara Hathaway
Barbara Kinsey
Barbara Nyseter
Barbara O'Brien
Barbara Rodean
Barbara Ziemba
Barry and Ann Palmer
Benjamin Villa
Benjamin Williams
Bernard Gallagher
Bernice Watts
Beth Keister
Bettina Moffitt
Beverly Foster
Beverly Milligan
Beverly Pringle
Bevin Buchheister
Bob and Ann Whitcomb
Bonita Korengel
Bradley Boban
Brenda Bazemore
Brent Reitze
Brenton Campbell
Brian Loose
Brian Richter
Brianne Walsh
Brigham Bowen
Brooke Singler
Bruce Odessey
Bruno Vasta

Bryan O'Hare
Burt Dall
Camilla Barror
Cara Losey
Carelyn Sheppard
Carl Luebben
Carley Phillips
Carmel Pattison
Carol Cooke
Carol Jelich
Carol Maffett
Carole Bubas
Carole Nadeau
Caroline Mitchell
Caroline Mix
Carolyn Crow
Carroll Henderickson, Jr.
Cary "Mitch" Smalley
Casey Soneira
Casey Zurenko
Cassandra Burton
Cassandra Gray
Catherine Cratty
Catherine Mollick
Catherine O'Malley
Cathryn Meegan
Cathy Nagg
Cecelia Donovan
Cecil Backus, Jr.
Cecilia Rund
Celeste Herbert
Chad Dobson
Charles August
Charles Bores
Charles Byus
Charles Cuffley
Charles Dougherty
Charles Eberhart
Charles Fisher
Charles Hager
Charles Harne III
Charles Lawrence
Charles McCarthy
Charles Michaels
Charles P. Johnson
& Associates
Charles Robinson
Charles Ruzicka, Jr.
Charles Scott
Charles Walthall
Charles Webb
Charlotte Gardner
Charlotte Preece
Charlotte Tabisz
Chelsea Hunt

Cheryl Giering
Chestertown Garden Club
Chiung hui Juan
Chris Carter
Chris Figueras
Chris Stancliff
Chris Trumbauer
Christian Wagman
Christiane Manko-Morgan
Christina Jordan
Christina Knepper
Christina Tryon
Christine Moraski
Christine Wagner
Christine Werner
Christine Zuzarte
Christopher Brennan
Christopher Landis
Christopher Vale
Christopher Wildmann
Christy McKinney
Chuck McCarty
Cleo Karafas
Clyde Freeman
Coleen Loomis
Conchita Tuers
Cornelia Huger
Courtenay Culp
Courtney Knatz
Courtney Smith
Craig Nickel
Cristan Farmer
Cynthia Fischer
Cythia Payne
Dan Esser
Dan Zaccagnini
Dana Billock
Dana Bradshaw
Dana Penrod
Daniel and Paula Wortman
Daniel Hellerstein
Daniel Omahen
Daniel Shively
Daniel Southworth
Danielle Bartlett
Danielle Cornell
Daphne Fuentevilla
Darbie Maccubbin
Darlene Lehman
Darlene Levenson
Darlene Wright
Dave Heintzelman
David and Diane Egge
David and Lorraine Fike
David Baltimore

David Borchardt
David Earles
David Ehrenfeld
David Escobar
David Goggin
David Hess
David Kent
David Martin
David Murphy
David Nelson
David Nelson
David Peerless
David Pettit
David Sabol
David Sands
David Schneider
David and Jacqueline Regan
David Verchomin
David Weinstein
David Weiss
Dawn Jacobs
Dawn and Craig Turner
Dean Hoover
Deana Crumbling
Debbie Johnson
Debbie Wagener
Debbie Wetzel
Deborah Grim
Deborah Hanka
Denise Christenson
Denise France
Dennis Crawford
Dennis Dela Cruz
Dennis Cusack
Derek and Eeda Wallbank
Derek Thiessen
Desmond Welch
Dewey Newman
Diana Weatherby
Diane Ritchie
Dina Baxter
Dolores Karam
Dolores Milmoie
Dolores Norton
Don and Taruna Barber
Don Fletcher
Donald and Alice Hirschfeld
Donald and Renate Powers
Donald Concord
Donald Couchman
Donald Crouch
Donald Phillips
Donald Rejonis
Donald Walter
Donna Armiger



\$1- \$249 (continued)

Donna D'Ascenzo
Donna Horoschak
Donna Sellman
Donna Storm
Doris Buck
Dorothea Parault
Dorothy Beidleman
Dorothy Leonard
Dorothy Matanin
Dorothy Muhlena
Dorothy Tartaglia
Douglas Chavis
Douglas Guessford
Douglas Trower
Duane Degler
Dustin and Shannon
Baldridge
Dwayne Hampton
Dwight Sullivan
E.F. Wieboldt
Earl MacDonald
Ed and Julie Hester
Ed Crane
Edmund Tortolani
Eduard Orvisky
Edward and Margaret Haser
Edward Dennis
Edward Ditto
Edward Hogan
Edward Hogarth
Edward Hudson
Edward Kafader
Edward McCoy
Edward Murray
Edward Scheiderer
Edward Wright
Elaine Dodd
Elaine Wood
Eleanor Dayhoff-Brannigan
Eleanor Prout
Eleanor Riggs
Elisabeth Jones
Elise Egolf
Elise Larsen
Elizabeth Buckell
Elizabeth Denniston
Elizabeth Hessel
Elizabeth Jedlicka
Elizabeth Jevons
Elizabeth Johnston
Elizabeth Payer
Elizabeth Shelton
Elizabeth Smith

Elizabeth Van Dolah
Elizabeth Williams
Ellen Anderson
Ellen Charles
Ellen Ewart
Ellen Oberholtzer
Elvia Thompson
Emily Conrad
Emily Durkee
Emily Hollister
Emily Neal
Emily Tai
Erasmia Lois
Eric Barger
Eric Borsoni
Eric Winnette
Ernest Thomas
Erwin Roeser
Estelle Ison
Eudokia Bourque
Eugene Chudakov
Eugene Langbehn
Eugene Seward
Eugenia Bibb
Evelyn Adkins
Evelyn Nolan
Fallon McCormick
Farley Fischer
Faye Funderburke
Felicia Stolusky
Felix Lapinski
Flora Ingenhousz
Florence Pringle
Foster Hutchinson
Frances Fox
Frances Gracely
Frances Peck
Frances Reynolds
Frank Sanford
Frank Wright
Franklyn Dailey
Freddie Mac Foundation
Frederick Adams
Frederick Yardley
Fredrika Moser
G. Covi
Gabrielle Long
Gail Fought
Gail Gorlitz
Gail Overcash
Gail Phillips
Gary Anderson
Gary Glowac
Gary Moulton
Gary Schroder

Gautam Patel
Gene Lewis
George and Martha Schmidt
George Day
George Martin
George Morse
George Sisson
George Steffens
Georgine Garbisch
Geraldine Clinton
Gerhard Klose
Gilberto Carbajal
Gina Stracuzzi
Girish Jadhav
Glenna Plitt
Gloria Hicks
Gloria Roper
Goldie Nussbaum
Gorm Emberland
Grace Miller
Greg Knauf
Gregory Dowd
Gregory Elman
Gregory Jones
Gregory Kalik
Gregory Rydzak
Gustavo Sims
Guy W. Hager
Gwen Manseau
Gwendolyn Skeens
H. Norman Hough
Harold Huecker
Harold Merson
Harold Wheeler
Harry Coleman
Harry Davies
Harry Rietman
Harvey Holtgraver
Heather Stevens
Harold and Ruth Gainer
Heidemarie Bibber
Heidi Bossley
Heidi Overby-Lee
Heidi Rothenhaus
Helen Alexander
Helen Czarniewicz
Helen Davies
Helen Eliason
Helen Shockley
Henry Fawell
Herbert and Rita Posner
Herbert Garten
Herbert Morris
Hilary Falk
H. Jay Penny

Holly Spalt
Hugh Marbury
Humberto Olivera
Irene Dearie
Irene Johnson
Irene Rice
Irene Robling
Isabel Sherdon
J.C. Humphreys
Jack Hawkins
Jacob Thompson
Jacqueline Bradley
Jacqueline Fritsch
James and Vincenza
McGinnis
James Bailey
James Bonomo
James Bruchey
James Burge
James Cohee
James and Roberta Davis
James Dominick
James Gelatt
James Handy
James Heffernan
James Hubbell
James Jones
James Kinney
James Kreiter
James Landis
James Ledger
James Mackley
James McQueen
James Mudd
James Sanders, Jr.
James Scully
James Sherring
James Sigafoose
James Smith
James Thomas
James Thompson
James Tucker
James Wilcox
Jamie and Laura Baxter
Jamie Darr
Jamie Fawell
Jane Jessey
Jane Miller
Jane Pittman
Janet Camara
Janet Douglas
Janet Fisher
Janet Martz
Janice Hedges
Jason Barker

Jason Crucoff
Jason De Los Reyes
Jason Williams
Jean Engman
Jean Jones
Jean Rodgers
Jean Schneider
Jeanne Dagradi
Jeanne Saunders
Jeannette Altman
Jeannine Saunders
Jeff Cogan
Jeffery Drescher
Jeffrey Green
Jennifer Couzin-Frankel
Jennifer Koh
Jennifer Raulin
Jennifer Shaffer
Jenny Hopkinson
Jeremy Walker
Jerome Boeckmann
Jerome Lester
Jess D'Ambrosi
Jessica Dax
Jim Burgin
Jim Cave
Jin Ok Yang
Joan Cmarik
Joan Craver
Joan Gugerty
Joan Hekimian
Joan and Theodore Kaiser
Joan Pickens
Joan Saenz
Joan Schembri
Joan Wilson
Joanna Remmel
Joanne Darkey
Joanne Darky
Joe and Eva Barsin
Joe Mullineaux
Joerg Schnackenberg
Johanna Robinson
John and Mary Pugh
John Bacon, Jr.
John Bishop
John Boyle
John Byle
John Calvello
John Capone
John Carter
John Coleman
John Crucoff
John Diamante
John Enterline

John Ferguson
John Fouts
John Friel
John Harms
John Hopkins
John Lee
John Light
John Magee
John Marchetti
John McClelland
John Restall
John Rhoderick
John Richter
John Rowe
John Saupp
John Scott
John Scott
John and Virginia Senes
John Sharples
John Shepherd
John Sprock
John Stewart
John Taylor
John Thackrah
John Van Laningham
John Weiss
John Yi
Jon Schraft
Jonathan Block
Jonathan Mizrack
Joseph and Betty Saunders
Joseph and Stephanie Brewer
Joseph Baker
Joseph Derr
Joseph Rostkowski
Joseph Smith
Joseph Snyder
Joseph Toth
Joseph Wynne, III
Josephine Hargis
Joyce Baden
Joyce Jacobs
Joyce Kunkle
Joyce Mayor
Joyce McLucas
Judith Jamison
Judy Boyle
Judy Goldfarb
Judy and Steve Petsonk
Judy Pressman
Julia Breed
Julia Hawrylo
Julia Paules
Julia Pruchniewski
Juliana Ammon



Donors

\$1-\$249 (continued)

Julie Hare
Julie Jensen
Juliette Wheeler
Jun Lee
June Ackerman
June Coari
K. Busch-Bernhardt
Karen Adams
Karen Carp
Karen Claney
Karen Hefner
Karen Marie Klima
Ludwitzke
Karen McNulty
Karen Mullin
Karen Pell
Karen Richardson
Karen Stevenson
Karin Olsen
Karl Brass
Karl Matthes
Kate Cleary
Katharine Jones
Katherine Jaouni
Katherine Lacey
Katherine McGreivy
Katherine Metcalf
Kathleen Flibbert
Kathleen Governale-Zaidman
Kathleen Kirby
Kathleen Muller
Kathleen Rhodes
Kathleen Siebert
Kathleen Sullivan
Kathleen Turner
Kathleen Ziffer
Kathryn Allison
Kathryn Aquilla
Kathryn Carter
Kathryn Robinson
Kathryne Hansell
Kathy Hawkins
Kathy Schnaubelt
Katie Simon
Kavita Pavamani
Kay Katz
Kaylan Kaatz
Keith Risser
Kelley Cox
Kelli Johnson
Kelloanne Johnson
Kelly Bollwahn
Kelly Foulke

Kelly Lowe
Kelly Ridgewell
Kelsey Romeo-Stuppy
Ken Heist
Kenneth Dorn
Kenneth Lauderdale
Kenneth Seiple
Kevin Boyle
Kevin O'Brien
Kevin West
Kevin Zucker
Kim Lycette
Kim Piasecki
Kim Spangler
Kimberly Busch
Kimberly Gough
Kraig Kline
Kristi Starr
Kristin Foringer
Kristin Marion
Kristin Mele
Kristin Poland
Kristine Miller
Kyle Priddy
Laetitia Combrinck
Lamar Lewis
Lambert Zaengle
Larry Campbell
Larry Feather
Laura Anthony
Laura Cammarata
Laura Noell
Lauren Greoski
Lauren Phipps
Lauren Sadler
Laurie Burr
Lawrence Lacey
Lawrence Sager
Leah Laurange
Leam and Anne Martin
Lee Franklin
Leo McDonagh
Leonard Schreiber
Lesley Cook
Leslie Berman
Leslie Gradet
Lester Fowler
Lewis Palombo
Libby Steinberg
Liddell Madden
Linda Dunn
Linda Leary
Linda Naas
Linda Nowack
Linda Opiekun

Linda Rice
Linda Tuschman
Linda Vrooman
Lindsay Eney
Lindsay Lang
Lindsay Ward
Lindsey Lord
Lisa Cesario
Lisa Duffy
Lisa McCaffrey
Lisa Singler
Lisa Smith
Lisa Wiegmann
Lizabeth Walters
Lois Aughenbaugh
Lois Erhard
Lois Robinson
Lora Spalt
Lorrie Rothgery
Louise Lawrence
Lucretia Marmon
Lyn Lansdale
Lyndeale Bernard
Lynne Fitzhugh
Lynne Sendjo
Malcolm Hutto
Marc Charpentier
Margaret Boles
Margaret Dimoia
Margaret Griggs
Margaret Kwiatkowski
Margaret Palmer
Margaret Pryor
Margaret Ruby
Margaret Sinyard
Margaret Stevens
Margaret Taliaferro
Margaret Upaul
Margaret Williams
Margriet Mitchell
Marguerite Jenkins
Maria Oria
Marie Bunting
Marie Kosanovich
Marilyn Bates
Marilyn Hickey
Marilyn Mause
Marilyn Simacourbe
Marinoelle Hernandez
Marion Haspert
Marisa Freese
Marj Sparer
Marjorie Campbell
Marjorie Cahn
Marjorie Craig

Mark Robinson
Mark Roskin
Mark Smith
Mark Warner
Mark Williams
Martha Holland
Martha Krieger
Martha Schmidt
Martha Williams
Martin Peltzer
Marvin Kranz
Marvin Morrison
Marvin Paddy
Mary Ann Cheston
Mary Ann Mann
Mary Becka
Mary Clarke
Mary Dodge
Mary Dumm
Mary Ellen Olcese
Mary Helen Winter
Mary Kay Ganning
Mary Krehling
Mary Lanigan
Mary Ostergranite
Mary Patricia Howe
Mary Spiri
Mary Stiles
Mary Sullivan
MaryBeth Sorady
Matthan Martir
Matthew Mullin
Matthew Smith
Matthew Straiter
Maureen Zeiss
Maurice Day
Maya Lentz
Meg Jenkins
Meghan Lovett Capone
Melanie Odlum
Melissa Bunker
Melissa Rose
Melissa Vecera
Merle Sturm
Michael and Jessica Chapman
Michael and June Robinson
Michael and Melanie Teems
Michael Arones
Michael Beer
Michael Bird
Michael Brodie
Michael Creighton
Michael Lane
Michael Reed, Jr.
Michael Ryan

Michael Schaub
Michael Singer
Michele Parr
Michelle Lawrence
Michelle Moodispaw
Michele Nicole
Michelle Priddy
Michelle Serafin
Michelle Sweeney
Michelle Whissel
Mightor Estrella
Mike and Verna Holtzendorf
Mike Eckhart
Mildred Hann
Mimi Frank Hodsoll
Mitchell Pressman
Molly Hauck
Molly Martin
Molly Mullins
Mona Hicks
Myra Hall
Nan Bayster
Nancy Alper
Nancy Chu
Nancy Harvey
Nancy Inman
Nancy Leonard
Nancy Morgan
Nancy Newkirk
Nancy Rodman
Nancy Sorden
Nancy Zeidman
Naomi Greenberg
Natalie and Beth Spickler
Natalie Howard
Natalie Wilson
National Aquarium
of Baltimore
National Wildlife Federation
Neal Halsey
Neal Townsend
Nell Gilmore
Nicholas and Francine
Sinchak
Nicholas Dipasquale
Nicholas Newlin
Nicolas Ialongo
Nicole Claude
Nicole Richelderfer
Nikki Brandemarte
Norann Beck
Noreen Dobson
Norma Loeser
Norma Pettis
Norma Smith

Norman and Susan Levine
Norman McCord
Olga Owens
Olivia Sparer
Pamela Goscenski
Pamela Harding
Pamela Roo
Patricia Jeffers
Patricia Forbes
Patricia Gurevitch
Patricia Hillman
Patricia Jagodzinski
Patricia Jonas
Patricia Reilly
Patricia Rengel
Patricia Ross
Patricia Schuetz
Patricia Trent
Patricia Tonkin
Patricia West
Patricia Wyman
Patrick Flanagan
Patti Kinlock
Patti Lapinski
Paul and Kendra Redmond
Paul and Marjorie Richter
Paul Englert
Paul Hayne
Paul Helene Shoemaker
Paul Hurwitz
Paul Starke
Paul Tracy
Paula Gil
Paula Shea
Pauline Campbell
Peggy Harris
Peggy Murchake
Peggy Stamm
Penny Beitman
Penny Birdsong
Penny Womack
Pete Springston
Peter Bradley
Peter Currer
Peter Goodwin
Peter Luborsky
Peter Quinn
Philip Dunn
Philip Keeler
Philip True
Phillip DeVore
Phyllis Beard
Phyllis Dickey
Phyllis Whaley
Pierre Francois



\$1-\$249 (continued)

Plato Moore
Pong Pathoumthong
Quang Sang Thai
Rachel Cesario
Radoslaw Savage
Raj Gupta
Ralph Hutchins
Rance Burger
Randell Henderson
Randi Rittman
Randu Hogan
Raymond Cline
Raymond Updike
Rebecca Cunard
Rebecca Ridgley
Reg Fields
Renee Braun
Reuel Kaighn
Richard Davison
Richard Hall
Richard Hildreth
Richard LaGala
Richard Nickels
Richard Norton
Richard Patterson
Richard Peppiatt
Richard Raskhodoff
Richard Rothe
Richard Spencer
Richard Wanerman
Rita Holmes
Rita Spencer
Robert Amirault
Robert and Goedele
Fradkin-Gulikers
Robert and Lynda Ingram
Robert and Betty Batchelor
Robert Brown
Robert Carson
Robert D'Agostino
Robert Davidson
Robert Ebel
Robert Elliott
Robert Gallagher
Robert Geesaman
Robert Grant
Robert Hope
Robert Hutchinson
Robert Kearney
Robert McCloskey
Robert Nally
Robert Oliver
Robert and Karin Post

Robert and Susan Post
Robert Pyatt
Robert Resnik
Robert Ringdahl
Robert Rodriguez
Robert Rogowsky
Robert Sparks
Robert Sutton
Robert Swid
Robert Westerdale
Robert Wirsing
Roberta Scherer
Rodney Abrahams
Roger Baker
Roger Schermerhorn
Roger Umstott
Roger Williamson
Roma Knee
Rona Kleiman
Ronald and Joanne Creamer
Ronald Farrah
Ronald King
Ronald Pytel
Ronald Schechter
Ronald Silverstein
Ronald Weston
Ronald Wilson
Rory Carroll
Rosa Rojas
Rosalie LaMonica
Ross Cropper
Ruann George
Rudolph Gawlik
Rudolph Keller
Russ Knight
Ruth Bowie
Ruth Connolly
Ruth Golding
Ruth Harrington
Ruth Przybyla
Ruth Schwalier
Ruth Shirk
Ryan Hamilton
Ryland Bailey
Ryna Marinenko
Sally Andrade
Sally Claggett
Sally Mayton
Sally Meyer
Sally Sellman
Salvatore Marsanopoli
Sam Young Moon
Samuel Rogers
Samuel Wood
Sandra Andrews

Sandra Kagen
Sandra Nielsen
Sandra Webb
Sanford Kirkland
Sara Kahn
Sara Moran
Sarah Boynton
Sarah Breitschwerdt
Sarah Campbell
Sarah Davis
Sarah Demetrowitz
Sarah Feidt
Sarah Holub
Sarah Lane
Sarah Lash
Sarah Potter Robbins
Saundra Fellerman
Scott Cochrane
Scott Douglass
Scott Fifield
Scott Moulton
Scott Stevens
Sean Byrne
Sean Samblanet
Shane Sutton
Shannon Cuffley
Shannon Mosca
Sharon Brown
Sharon Coleman
Sharon Embry
Sharon Nelson
Sharon Nettles
Sharon Reed
Sharon Shaffner
Shauna Kennedy
Shawn Brown
Shawn Jacubec
Sherard and Kathleen Cole
Sheriden Clem
Sherry Craft
Shira Catlin
Shirley Wigfield
Stacy Mogren
Stacy Surla
Stanley Nowak
Starrla Lares
Stephanee Wallace
Stephanie Blades
Stephanie Button
Stephen McHenry
Stephen McIntyre
Steven Murphy
Steven Pratt, Jr.
Storage Village, LLP
Sunny Hess

Susan Absher
Susan Kessler
Susan Levy
Susan Miller
Susan Powers
Susan Price
Susan Schooles
Suzanne Dupree
Suzanne Foster
Suzanne Lardeo
Suzanne Wellborn
Sylvia Chiofalo
Sylvia Francus
T. Peter Lowe
Tama Chu
Taylor McCaffrey
Terrence Edwards
Terry Ruffatto
Terry Yarbrough
Tessa Dyer
The Misenheimer Family
The Starnes Family
Thekla Fitzpatrick
Theodore MacDonald
Theophilus Cain
Thomas Abrams
Thomas Armstrong
Thomas Cook
Thomas Dillow
Thomas Foster
Thomas Haines
Thomas Hodges
Thomas Krispin
Thomas Lubey
Thomas Madden
Thomas Rinehart
Tien Nguyen
Tim Herbert
Tim Matthews
Tim McCloskey
Timothy Aley
Timothy Bowders
Timothy Brennan
Timothy Pulliam
Todd Gehr
Tom and Tina Bordonaro
Tom Leigh
Tom Sauer
Tom Simpson
Tracy Harrison
Tracy Scaltz
Trevor Morrissey
Tyler Mahy
Valerie Nyce
Valerie Wagne

Vera Young
Vicki Falter
Victoria Bourgeois
Victoria Martz
Victoria Waidner
Vincent Piselli
Virginia Barrett
Virginia Bridges
Virginia Drain
Virginia Russell
Virginia Schaffer
Vivi Rogers
Volkan Taskin
Wade Gregory
Walter Beckerman
Walter Landmesser
Wayne Dalton
Wayne Powell
Wendell Boyd
Wendy Zurinko
Whitney Hines
Whitney Morlock
Wilbur Garrett
William and Nan Miller

William Andersen
William Ariano
William Berg
William Breakey
William Brown
William Cann
William Clayborne
William Coe
William Fisher
William Francis Rienhoff
William Lenderkind
William Michie
William Minarik
William Rehrmann
William Stange
William Trapnell
William Zinger
Wilma Yurche
Wilnor Biscarra
Woodrow Sanders
Xiao Ye
Yuan Yuan Chiu
Zoe Warner

REMEMBERING THE PASSING OF

Senator Arthur Dorman



Each year the Chesapeake Bay Trust receives *In Memoriam* donations from family and friends who have lost a loved one who cared about the Chesapeake Bay. We are very sorry for the occasions that bring these gifts

to us, but we are incredibly grateful for the support. Most notably, we would like to extend our eternal gratitude to the loved ones of Senator Arthur Dorman who passed away in February 2012. The senator, who served on the Trust's board of trustees from its inception in 1985 until his retirement in 2003, played a large role in bringing Trust grant programs to a greater diversity of communities in Maryland. Each year the Trust awards the Honorable Arthur Dorman scholarship to a Maryland student in his honor.

Fiscal Year 2012 for the Chesapeake Bay Trust

For more information, please see the Trust's annual financial statements at www.cbtrust.org.



For 10 consecutive years, the Chesapeake Bay Trust has received a 4-star rating from Charity Navigator, the nation's leading independent evaluator of non-profit organizations, placing the organization in the top 1% of charities nationwide. According to Charity Navigator evaluators, this ranking which is the highest available for a nonprofit organization, indicates that the Chesapeake Bay Trust outperforms most other charities in America and is committed to sound financial management that is making a difference for the Bay. Almost ninety cents of every dollar the Trust receives goes directly to support on the ground projects and educational programs. The Trust's full financial statement is available at www.cbtrust.org.

FY 2012 SUPPORT AND REVENUE SUMMARY

Contributions

\$5,019,809

General, Bay Plate,
Bay and Endangered
Species Fund,
Fundraising, Other

Grants and Partnerships

\$1,352,597

Net Investment Income

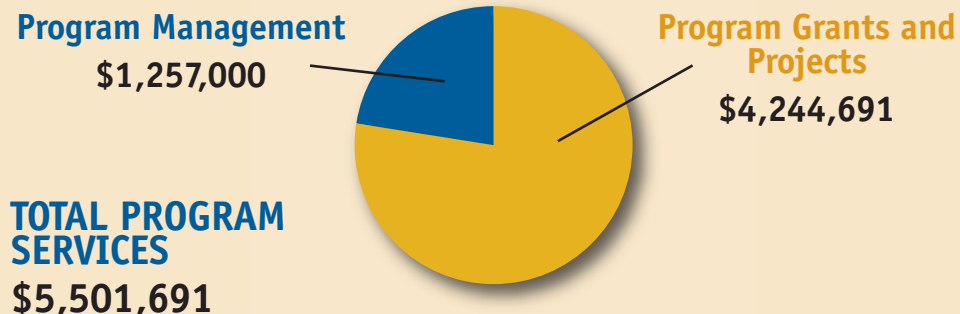
\$379,819

TOTAL SUPPORT AND REVENUE

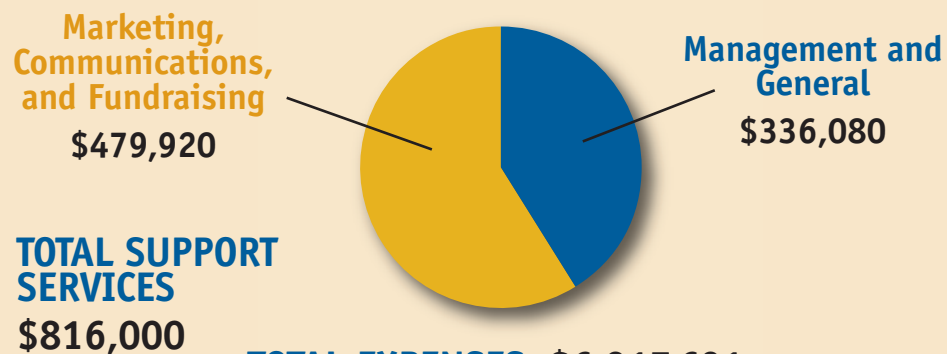
\$6,752,225

FY 2012 EXPENSE SUMMARY

PROGRAM SERVICES

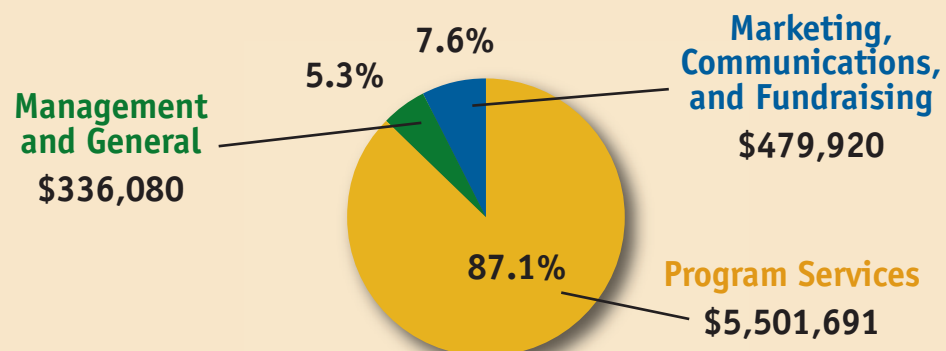


SUPPORT SERVICES



TOTAL EXPENSES: \$6,317,691
Change in Net Assets: \$434,534

OVERALL EXPENSES



*Thank you for
your support!*

Where the Money Comes From:

Maryland's Treasure the Chesapeake
license plate



Federal, state and
corporate partnerships



Individual and private
donations



Chesapeake Bay Fund
Tax Check-off



Where the Money Goes:

Education

Ensuring that students are environmentally literate through K-12 curriculum development, field experiences, and green school development.

Restoration

Advancing the science and implementation of restoration best management practices that reduce pollution and improve habitat.

Community Outreach

Engaging citizens and communities to improve the health of local waterways through community clean-ups, tree plantings and other stewardship practices and projects.