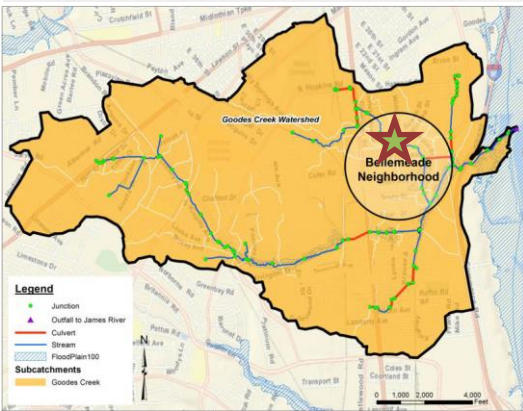




GREEN STREETS | GREEN JOBS | GREEN TOWNS INITIATIVE

The Green Streets, Green Jobs, Green Towns Partnership (G3) aims to stimulate the green jobs market and enable families to work where they live and play. Small to mid-sized communities can boost their local economies and protect water resources through the use of watershed planning, design and construction of stormwater best management practices.



Integrating the Flow of People and Water in Bellemeade

This project builds upon the ongoing "Walkable Watershed" project in the Bellemeade Community of Richmond. A host of projects have been identified through the Walkable Watershed process including the creation of "Green Streets." Through this funding, the partners will develop a green street concept plan for Minefee Street, which was identified as one of the main walking routes for residents, particularly students of Oak Grove-Bellemeade Elementary School. The conceptual plan will then be used to seek additional funding for implementation.

Drainage area: 1,436 acres

Stream length: 42,720.27 ft (8.09 miles)

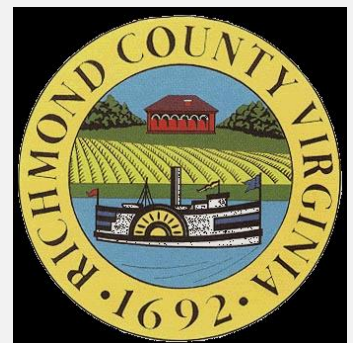
Impervious Surface: 627 acres (43.6% of the watershed)

Canopy: 391 acres

Non-canopy Pervious (grass, shrubs): 418 acres

The James River Association (JRA) in partnership with the City of Richmond, 3North, and GroundworkRVA, is developing a Green Street Concept Plan for Minefee Street in the Bellemeade community of Richmond that builds upon the ongoing "Walkable Watershed" project. The larger goal of a Walkable Watershed is to integrate the flow of people and stormwater, and this project will make that goal a reality through the following: 1) Assess Minefee Street to determine the best green street approach; 2) Engage the GroundworkRVA Green Team in the design process; and 3) Develop a green street concept plan for Minefee Street that can be used to seek additional funding for implementation.

stormwater practices in the neighborhood, water moves through ditches, open stream channels and underground pipes, many of which dump directly into the creek. JRA has partnered with other organizations and the City of Richmond over the past 3 years to raise awareness in the Bellemeade community about stormwater and how they can impact the health of the James River. The new trails, bridge, and future Green Street will create a much needed connection for the community and take the Walkable Watershed concept to the next level.



The project area lies within the Goode's Creek watershed which suffers from erosion, flooding and pollution. Due to the lack of

Walkable Watershed Concept Plan

In 2011 the City of Richmond, the Green Infrastructure Center, and Skéo Solutions partnered to develop a Walkable Watershed Concept Plan for the Bellemeade community of Richmond. Home to approximately 5,000 residents, Bellemeade is an underserved community located in the Goode's Creek watershed. The creek borders the Oak Grove-Bellemeade Elementary School, a state of the art LEED Silver certified school that opened in 2013, and the Bellemeade Community Center.

The Walkable Watershed Plan focuses on five (5) primary goals:

- connecting the neighborhood to the creek and the James River
- improving walking routes to the community center and school
- slowing flow, increasing infiltration and cleaning stormwater
- developing a sense of community around the creek and school
- creating outdoor education opportunities.

The plan specifically recommends Green Streets on primary school routes, including Minefee Street. This green streets project in the Bellemeade Community also ties into the City of Richmond's Watershed Plan for Goode's Creek which calls for a green street assessment for the entire Goode's Creek Watershed. The City of Richmond is in the process of implementing three stream restoration projects in this watershed as well, which is part of their Watershed Management Program.

SUSTAINABILITY & GROWTH: ADDITIONAL GREEN ACTIVITIES

Groundwork RVA cultivates young conservation leaders by creating green infrastructure in Richmond, Virginia's urban neighborhoods. They have 3 Green Teams made up of youth from Richmond Public High Schools that take on projects on a neighborhood level.

Groundwork RVA and the City of Richmond Department of Parks & Recreation are engaged in a Green Workforce partnership that prepares high school youth for careers in the parks, landscape, and green industry. These students develop leadership skills, the techniques of landscape maintenance, and knowledge of parks management. They currently maintain the grounds of the Oak Grove-Bellemeade Elementary School and Community Center. This group of students will be included in the design process to expose them to all phases of green infrastructure projects to aid in their career development. After implementation, it would be expected that they will be involved in the maintenance of the landscaped areas of Minefee Street.

JRA does not have any prior experience with "green street" projects, but JRA staff has ample experience working on all aspects of stormwater management and outreach projects, including working with local government, project implementation, and education and outreach on both the student and adult level.

JRA in partnership with other local organizations have been involved in this neighborhood for the past 3 years through being a member of the Goode's Creek Watershed Coalition, raising awareness in the community about stormwater through JRA's River Hero Homes program, installing free rain barrels for residents, leading trash cleanups, and holding watershed educational programs with youth.

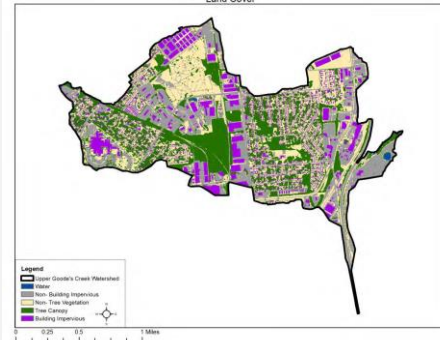
G3 Grant Awarded:
Status:

\$29,995
Concept Design

Proposed Green Streets



Upper Goode's Creek Watershed Land Cover



Project Partners: James River Association
Chesapeake Bay Trust, U.S. Environmental
Protection Agency.