



Prince George's County Community Resilience Hub Grant Program Request for Proposals



Chesapeake Bay Trust | 108 Severn Avenue, Annapolis, MD 21403
(410) 974 - 2941 | www.cbtrust.org

Prince George’s County

Community Resilience Hub Grant Program

At A Glance

Program Summary: Neighborhoods and businesses are faced with a growing need for readily available resources throughout the year and especially around extreme weather events (e.g., heat, flooding, and other hazards that interrupt daily life and impact safety). There is a need to establish and support climate resilience hubs to engage community members in programming on climate change, sustainability, and emergency preparedness. Resilience hubs offer targeted support during local climate-related events, helping Prince Georgians recover more quickly and safely while fostering community support as a key step toward greater resilience. Climate resilience hubs must be tailored to specific local needs, easy to access, and provided through trusted mechanisms. **We seek community-based organizations that can provide these needed services by developing climate resilience hubs.**

First Deadline: December 22nd, 2025, at 4pm EST
Second Deadline: March 19th, 2026, at 4pm EST
Applications will be accepted on a quarterly basis, until funds are exhausted for the fiscal year. See the Awards and Notifications section for information on decision dates based on application deadlines.

Eligible Project Locations: Prince George’s County, Maryland, excluding the City of Bowie

Request Amounts: Up to \$50,000

Learn more and submit your application at:
<https://cbtrust.org/prince-georges-county-community-resilience-hub-grant-program>

Contact: Delaney Samons, Program Officer at dsamons@cbtrust.org / 410-974-2941 x131

This Request for Proposals was released on 11/10/2025.

Table of Contents

Introduction and Program Goals	2
Local Jobs and the Community	3
What is a Climate Resilience Hub?	4
Sample Projects	5
Eligible Applicants and Locations.....	7
Funding Availability, and Timeline.....	7
Deadline.....	7
Application Review Process.....	8
Awards and Notifications.....	9
Contact.....	9
About the Chesapeake Bay Trust.....	9
About the Prince George’s County Department of the Environment (DoE)	10
Narrative Questions.....	10
Budget Instructions.....	10
Online Application Submission Instructions.....	10

Introduction and Program Goals

In recent years, our communities have faced increased threats as the climate changes: more severe rain events that cause flooding and power outages, more frequent and persistent excessive heat events that threaten human health, livelihoods and food security, and more. Prince George's County, as recommended in both its [Climate Action Plan](#) (CAP) and [Climate Action Implementation Strategy Plan](#) (CAISP), aims to create Resilience Hubs to support everyday community needs and during times of disruption and periods of recovery. The hubs will also be part of a planned future peer-to-peer Countywide "Resilience Hub Network" that will share resources, leverage expertise, and help ensure the resilience of communities throughout Prince George's County.

Grant funding will cover costs for eligible items needed to support resilience services and programs such as planning for and/or deployment of improvements to energy and electrical systems (e.g., solar photovoltaic (PV) technology, heat pumps, energy storage technologies), communication equipment, building and landscaping, creating community gardens, planting shade trees to cool community gathering places, programming such as communications and outreach on climate resilience, and more. Applicants are encouraged to leverage additional funds to ensure long term sustainability, such as through [Prince George's County's Energy Star Certification and Green Leasing \(ESGL\) Grant](#) and grants from the Chesapeake Bay Trust such as the [Community Engagement and Restoration Mini Grant Program](#), [Outreach and Restoration Grant Program](#), [Keep Maryland Beautiful](#), among others. See all the Trust's grant programs at <https://cbtrust.org/grants/>.

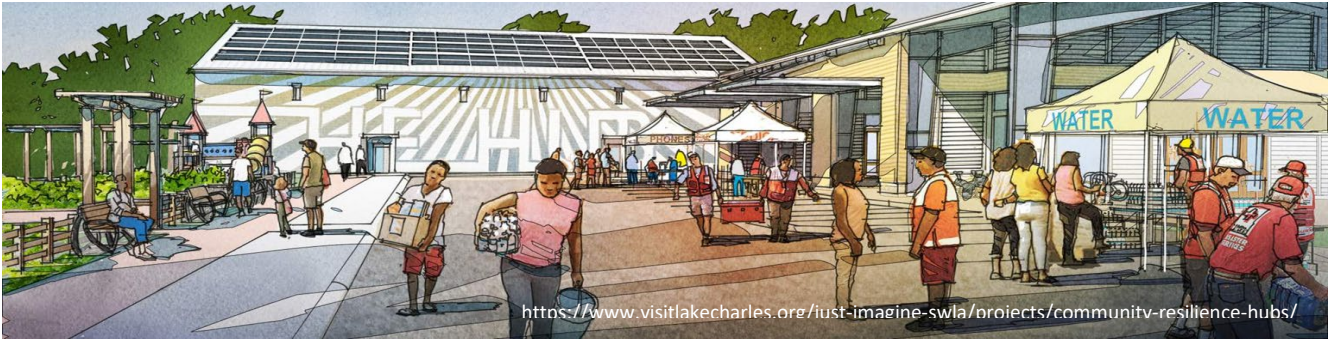
Applicants should integrate relevant County priorities such as healthy communities, woodland conservation, multi-modal transportation, economic development, sustainable growth, and agricultural and rural preservation goals into Resilience Hubs plans. Projects that support Countywide planning (i.e., [Plan 2035](#)), equity, transportation, and economic development goals are strongly encouraged.

Local Jobs and the Community

This grant program is focused on the environment, the local economy, and job creation. Prince George's County's "Jobs First Act," County Bill (CB)-17-2011, Sec. 10A-158 to 10A-162 sets the goal of procuring at least fifty one percent (51%) of the dollar volume of its goods and services, including, but not limited to, construction goods and services, to Prince George's County-based businesses and at least thirty percent (30%) to County-based small businesses. Proposals that meet or exceed the Jobs First Act are preferred.

Grant applicants are encouraged to coordinate with the [County's Supplier Development and Diversity Division](#) for County-based certified small business utilization in connection with the implementation of proposed grant projects. County-based business and County-based small business certification under CB-74-2016 (DR2) undergo extensive certification review through their existing minority business enterprise certification procedures, which establish capabilities and their principal places of operation in the County. Consider local Prince George's County-based businesses when contracting for services.

What is a Climate Resilience Hub?



Even minor climate and weather events can be catastrophic for residents. As such, the Prince George’s County Department of the Environment (DoE) seeks to strengthen the resilience of Prince George’s County communities so they will be better prepared to deal with and recover swiftly and safely from disruptions of all sizes. The creation of a planned future Resilience Hub Network comprised of local non-profit, community-based and religious organizations will provide trusted services and accessible support on a consistent basis as well as during emergency climate-related situations to meet the specific needs of local stakeholders.

Resilience Hubs are trusted community-serving facilities that complement emergency facilities, such as cooling and warming centers and shelters, by serving as coordination points for communication, distributing resources, building community cohesion, and advancing climate mitigation and adaptation goals year-round.

Prince George’s County-funded Resilience Hubs will facilitate community engagement and programming on climate change, sustainability, and emergency preparedness. They may also provide targeted support in response to local climate-related events such as extreme heat and flash flooding to help Prince Georgians get back on their feet in the quickest and safest way possible. Examples may include short-term distribution of food and water, provision of communications, health and social services, and charging stations for personal devices and electric vehicles.

Within this framework, Resilience Hubs should:

- Meaningfully engage residents and stakeholders in shaping the role of each hub, including community-based organizations, municipalities, homeowner’s associations, religious institutions, and educational institutions;
- Deliver targeted services that reflect local community needs;
- Support Countywide priorities such as [Plan 2035](#) as well as specific economic development, woodland conservation, multi-modal transportation, and agricultural preservation goals;
- Prioritize investment in communities that have been historically under resourced;
- Serve as “living laboratories” for integrating climate resilience strategies into service delivery (e.g., implementation and management of the public services on which people rely);
- Evaluate scalable models for long-term resilience investments; and
- Foster two-way communication between community-based organizations and the County.

As illustrated below, both the Prince George’s County CAP and CAISP call for the establishment of resilience hubs to serve the needs of Prince Georgians. Figure 1 shows other County initiatives related to climate resilience hubs in numbers 1, 2, and 3 with an intended future **grant program shown in number 4** which will

fund Technical Assistance Providers to support community resilience hubs and facilitate a peer-to-peer network.



Sample Projects

Resilience Hubs will provide readily available resources not only during local weather events that disrupt daily life and impact resident’s safety, but throughout the year. Community resilience hubs must be tailored to the specific needs of community members, accessible, and provided through trusted mechanisms.

To help plan your project, consider the five foundational resilience hub areas^{1,2} as defined by the Urban Sustainability Directors Network: 1) services and programs; 2) communication equipment; 3) buildings and landscape; 4) power system; and 5) operations. Resilience Hubs will be expected to operate on an ongoing basis as well as during localized disruptions. Understanding the needs of the current and future facility users will help tailor the facility improvements needed (building, site and related infrastructure) as well as its day-to-day operations and programming.

We encourage projects that seek to achieve complementary benefits to address both short- and long-term community needs; add value and services to improve quality of life; and help Prince Georgians get back on their feet in the quickest and safest way possible following localized weather events. Complementary technical and organizational assistance may be available to applicants seeking support in resilience hub planning and deployment processes. Through this complementary assistance, awardees of this grant program will be required to participate in a future peer-to-peer Countywide Climate Resilience Hub Network to share experiences, leverage resources, and expand organizational and climate resilience capacity. This assistance and more information is anticipated to be available by late 2026/early 2027, depending on funding availability.

Below is a non-exhaustive list of examples of services and projects that could be considered for this grant funding. Proposed projects should be based on what can be realistically achieved within the timeline, budget, and applicant’s organizational capacity.

¹Baja, Kristin. (2019). Guide to developing resilience hubs. Urban Sustainability Directors Network (USDN). Available at: https://resilience-hub.org/wp-content/uploads/2019/10/USDN_ResilienceHubsGuidance-1.pdf.

² Urban Sustainability Directors Network (USDN). (2025). Resilience Hubs. Retrieved May 2025 at: [Core Components – Resilience Hubs https://resilience-hub.org/core-components/](https://resilience-hub.org/core-components/).

1) Services and Programs

- a) Provide training and other resources to educate residents about opportunities to incorporate renewable technologies such as solar, heat pumps, and induction stoves into their homes and businesses (Financial resources available at <https://www.princegeorgescountymd.gov/departments-offices/environment/sustainability/sustainable-energy/energy-star-certification> and <https://www.princegeorgescountymd.gov/departments-offices/environment/sustainability/sustainable-energy/clean-energy-program/solar-energy-grant>);
- b) Offer classes to support personal resilience practices such as cooking using home grown produce, flood protection for homes, energy conservation practices, and first aid training;
- c) Engage residents in restoration projects (e.g., planting edible gardens and shade trees) and encourage behaviors that benefit environmental health;
- d) Increase awareness about site beautification and improvements using the site's existing native plants, energy efficiency strategies, and climate resilience best practices;
- e) Build the workforce readiness and skills of historically underrepresented groups and connect their career goals to jobs in environment, sustainability, energy, and/or natural resource protection.

2) Communication equipment

- a) Assess resilient hub users' communication needs, including language requirements to identify appropriate communication techniques and technologies and
- b) Plan for and implement upgraded communications systems to facilitate connections and collaboration among residents and with resilience hub operators.

3) Buildings and landscaping

- a) Plant native shade trees;
- b) Add community gardens that grow food and provide lessons about local food and healthy cooking options;
- c) Conduct a building energy audit to improve building performance and reduce energy demand;
- d) Add green building features for energy efficiency, water conservation, and to improve comfort; and/or
- e) Add or improve a staging area to the site for outdoor collaboration space.

4) Power system

- a) Conduct feasibility assessment for renewable energy development and electrification system upgrades;
- b) Develop a plan for onsite renewable energy storage, with consideration of community input and safeguards; and/or
- c) Incorporate renewable energy technologies into the facility to advance climate resilience (e.g., solar energy, energy storage).

5) Operations

- a) Collect and share data about site conditions (e.g., air quality, temperature, and/or humidity) to measure changes resulting from property improvements;
- b) Develop a plan for operationalizing the proposed projects (e.g., key personnel, roles, training needs, and future funding support); and/or
- c) Request resources and ongoing support for training and leadership development through the peer-to-peer Countywide Climate Resilience Hub Network.

Eligible Applicants and Locations

The Prince George’s County and the Trust welcome applicants from the following organizations:

- Nonprofit organizations
- Community associations, including homeowner associations (HOAs)
- Faith-based organizations
- Prince George’s County municipalities
- Watershed organizations
- Public and independent higher educational institutions
- Municipalities

Applicants that are not based in Prince George’s County must have a Prince George’s County-based partner, the role of which should be clearly articulated in the proposal and highlighted in a Letter of Commitment to be included.

Projects that are implemented on public property, property owned by a municipality, a non-profit organization, community owned property, and publicly accessible commercial or private property are eligible with permission and a letter of support from the property owner.

Projects must be implemented in Prince George’s County, Maryland. Currently, because the City of Bowie is managing its stormwater program independently of the County, projects in the City of Bowie are not eligible for funding in this program.

Funding Availability and Timeline

Funding Availability: The funding partners anticipate \$217,000 funds available in total for this fiscal year. It is anticipated that most applications will request up to \$20,000 for services and programs, communications equipment, and operations, with some applications for buildings and landscape or power systems requesting up to \$50,000. Funding requests may be higher with justification in the application and approval from the Trust point of contact.

Project Timeline: Projects must be completed within 12 months upon receipt of the award. Requests to extend the project completion period will be reviewed and considered on a case-by-case basis.

Deadline

Proposals for the FY26 Prince George’s County Community Resilience Hub Grant Program will be accepted on a quarterly basis with two deadlines, until funds are exhausted for the fiscal year. Funds will be awarded on a first-come, first-served basis.

Application Deadline	Funding Notification
December 22 nd , 2025, at 4pm EST	March 2026
March 19 th , 2026, at 4pm EST	June 2026

Check this program’s website for the most up to date information about the status of this program.

Evaluation Criteria and Application Review Process

Evaluation Criteria

The following criteria will be used by reviewers to score your proposal:

Most Important Criteria:

- ◆ **Consistency with the Request for Proposals (RFP) and program goals** (Scale of 1 to 15)
 - Is the project proposed consistent with the intent and goals of the grant program?
- ◆ **Consistency with Countywide Goals** (Scale of 1 to 15)
 - Does the project support Countywide planning (i.e., Plan 2035), equity, transportation, and economic development goals? Does this project support the County's Climate Action Plan (CAP) and Climate Action Implementation Strategy Plan (CAISP) that call for establishing resilience hubs?
- ◆ **Cost Effectiveness/Budget** (Scale of 1 to 20)
 - Is the budget appropriate and cost effective?
 - Are the budget line items justified in the project narrative? Cash and in-kind match are not required, but leveraging funds, especially for capital and construction projects, can result in higher scores.
- ◆ **Likelihood of Project Success** (Scale of 1 to 20)
 - Will the project endure beyond the duration of the grant or otherwise have a lasting impact?
 - Will additional resources be needed to maintain the value of the project, and if so, has that issue been adequately addressed in the proposal?
 - Are the people and groups needed to do this work included in and supportive of the project (e.g., neighbors, community members served, landowner, etc.)?

Important Criteria:

- ◆ **Justification** (Scale of 1 to 10)
 - Does the applicant justify the need for the project? Does the project support broader goals of the existing community efforts?
- ◆ **Demonstration Value** (Scale of 1 to 10)
 - Does the project have demonstration value and/or transferability? How can this project be used as a model or pilot for future efforts?
- ◆ **Partnerships and Community** (Scale of 1 to 10)
 - Are any key partnerships required, and if so, are these partnerships included in and supportive of the project?
 - If the lead applicant is not a member of the community served by the project, is a transfer of "ownership" to the community built into the project and the ability of the community to continue the work likely?

Funding partners reserve the right to fund projects and budget items that advance their mission and meet their specific funding priorities and criteria.

Application Review Process

All submitted applications are scored by technical experts in the field supported by this RFP and discussed by a review committee. Reviewers score all applications based on the evaluation criteria listed in the above “Evaluation Criteria” section.

The funding partners reserve the right to fund projects and budget items that advance their missions and meet specific funding priorities and criteria.

Awards and Notifications

All applicants will receive a letter stating the funding partnership’s decision. An application may be declined, partially awarded, or fully awarded. If approved, the Trust will send an award agreement with award conditions and due dates of status, progress, and final reports. The Trust will mail the first award payment to the requesting organization following: satisfaction of any phase 1 payment award contingencies, including upload of the signed award agreement. In cases where the awardee fails to submit a status report, progress report, final report, or other requirement by the due date, the Trust reserves the right to terminate the award agreement and require a refund of funds already transferred to the awardee.

When the project is complete, awardees are required to complete final reports that may include but are not limited to submission of all receipts for supplies, invoices for subcontractors/contractors, and copies of timesheets for personnel time used (timesheets must include date, name, time worked per day, and coding to tie the time worked to the award).

All financial back-up documentation will be grouped and numbered to correspond to the budget line item reported as spent. Organizations with outstanding final, progress, or status reports will not be awarded additional grants.

The awards will be announced in March 2026 and June 2026, depending on date of application submission.

Contact

For help with your application, project guidance, and/or assistance with drafting a budget, contact Delaney Samons at dsamons@cbtrust.org / 410-974-2941 x131.

About the Chesapeake Bay Trust

The Chesapeake Bay Trust (Trust) (<https://cbtrust.org/>) is a nonprofit, grant-making organization dedicated to improving the bays, streams, rivers, forests, parks, and other natural resources of all our local systems, from the Chesapeake to the Coastal Bays to the Youghiogheny River. The Trust, supported in large part by Maryland’s Chesapeake Bay License Plate and partnerships with other regional funders, engages and empowers diverse groups to take actions that enrich natural resources and local communities of the Chesapeake Bay region. Since 1985, the Trust has awarded over \$160 million in grants to municipalities, nonprofit organizations, schools, and public agencies throughout Maryland and the Chesapeake Bay watershed.

The Trust is committed to the advancement of diversity and inclusion in its award-making and environmental work. As a result, the Trust strongly encourages applications directly from underrepresented groups, and for projects that increase awareness and participation of communities that are traditionally underrepresented, such as communities of color. For a full description of the Trust’s efforts to engage under-engaged groups, see our strategic plan at www.cbtrust.org/strategic-plan and <https://cbtrust.org/diversity-inclusion/>.

About the Prince George's County Department of the Environment (DoE)

To engage residents in the restoration and protection of the local rivers and streams of Prince George's County, the Department of the Environment (DoE) (<https://www.princegeorgescountymd.gov/departments-offices/environment>) provides funding for this grant program. DoE works for a healthy, beautiful, and sustainable County through programs that provide climate resilience, flood control, clean water, trees, recycling and waste management, litter prevention, animal services, and pet adoption in partnership with residents and other stakeholders.

Narrative Questions

Use the link below to download the narrative questions template. Complete all questions and upload the completed document as a Microsoft Word or PDF file: https://cbtrust.org/wp-content/uploads/Community-Resilience-Hub-Grant-Narrative-Questions_FINAL.docx.

Budget Instructions

Financial Management Spreadsheet – Application Budget Upload

You will be asked to upload your budget using the “Application Budget” worksheet of the Chesapeake Bay Trust’s **Financial Management Spreadsheet (FMS)**, an excel file template. The template can be found by visiting <https://cbtrust.org/forms-policies/> where you can also watch a video with instructions on how to complete the FMS.

Financial Management Spreadsheet – Application Budget Information

This online application component will ask you to enter budget category and request totals. These totals will be automatically calculated in the FMS Application Budget; therefore, you only need to copy and paste the values from the FMS to the online application. Applicants may request funds for indirect costs, which must be listed separately (not combined with salary) and must be less than 20% of the total request.

Additional Budget Justification

This online application component will ask you to provide a descriptive budget narrative to justify and explain costs. If you plan to provide a fixed regular sum paid as a salary for the applicant’s staff or allowance project, detail the scope of work provided, the compensation amount and how that value was determined, and who the funds will support. In this program “stipends” for paid public participation for grant projects are not allowed; consider applying for the “additional project support fund” instead. Funds supporting bodies of work or applicant staff that are justified are allowed and encouraged. If the success of the work is contingent upon award of other funds, make this clear in your budget justification.

Online Application Submission Instructions

The Trust uses an online system for the application process, and if awarded, project management. Watch our video on how to apply for and submit an application using our online system at <https://cbtrust.org/grants/>.

To apply for an award:

1. Go to <https://cbtrust.org/prince-georges-county-community-resilience-hub-grant-program> and click on “Start a New Application”
2. Log in with the email address and password of the Project Leader for the proposed project.
 - a. If you have applied in the past, use your existing username and password (if you have forgotten either of these use the ‘forgot password’ feature).
 - b. If you have not used our online system before, click on “New Applicant” and follow the instructions.

Applicants must submit applications in the **Chesapeake Bay Trust Online System** by **4:00 pm EST on December 22nd, 2025 or March 19th, 2026**. Late applications will not be accepted, and the online funding opportunity will be cut off promptly at 4:00 pm for the respective due dates.

By submitting an application to this program, applicants acknowledge that: 1) they are compliant with federal employment and non-discrimination laws and 2) they have not been debarred, convicted, charged or had a civil judgment rendered against them for fraud or related offense by any government agency (federal, state or local) or been terminated for cause or default by any government agency (federal, state, or local). In addition, all final products will be provided to the funding partners for use and distribution at the sole discretion of the funding partners.

Online Application Form

You will be asked to provide the following information on the online application form. Some items are required in order to submit your application. Refer to the online application for details.

Eligibility Quiz: This three-question quiz is meant to assist you in determining if your project meets the requirements of this award program and that your staff/organizational structure best supports a successful application.

Applicant Information Tab:

- Provide the organization’s name, mailing address, phone number, organization type, mission, and EIN number.
- Provide the Executive Officer and Project Leader’s name, title, address, phone, and email address.
 - Both an Executive Officer and a Project Leader, two separate individuals, must be identified for all applications.
 - The Executive Officer and Project Leader must both be able to make decisions on behalf of the organization either as a board member, an employee, or other

Watch our video on how to apply and how to submit an application using our online system at <https://cbtrust.org/grants/>.

Definitions

The Executive Officer is the individual that oversees the organization (e.g., Executive Director, Chief Executive Officer, Mayor, President or Vice President, Principal (for schools), etc.) and has the authority to sign/execute award agreements on behalf of the organization. The Executive Officer information is tied directly to all the organization’s applications and should not vary from application to application. If the Executive Officer could be listed as the Project Leader in a future proposal, we recommend listing a Board Member or other higher-ranking position of the organization as the Executive Officer in order to reduce the variation in the Executive Officer across applications.

The Program Leader will be responsible for all project coordination and correspondence with the Trust for the duration of the project. The email address entered here **MUST** be the same as the email address you used to log in to the online system. The Project Leader is the primary point of contact for the application, and the email address used to submit the application via the online system must be that of the Project Leader. Applications in which the email address associated with the Project Leader in the applicant information tab of the online opportunity does not match the email address used to submit the application will not be considered for funding. The Trust cannot conduct any official correspondence with contractors or other project partners. If at any time the Project Leader cannot continue in the position, the organization must contact the Trust and assign a new qualified Project Leader.

- approved position recognized by the organization but not a contractor of the application.
- To avoid conflict of interest issues, individuals associated with for-profit entities to be engaged in the project cannot serve in either role.

Project Information Tab: Provide a project title; project abstract; the watershed, and legislative district in which the project is located; and the latitude and longitude coordinates of the project location.

Timeline Tab: Add the project start and end date. Provide a project timeline that includes major tasks and their associated start and end dates.

Deliverables Tab: Provide estimated metrics for your proposed project such as project participants and outreach and restoration outcomes.

Volunteers Tab: Provide a description of volunteer activities, the number of volunteers, and total number of volunteer hours.

Project Partnerships:

- Provide a list of project partner organizations or contractors, individuals, their areas of expertise, and their role(s) in your project.
- Applicants are encouraged to upload a Letter of Commitment for the project from each partner describing in detail the partner’s role or contribution to the project. Applications including strong Letter(s) of Commitment often receive higher scores. If not submitted with the application, Letter(s) of Commitment may be required prior to the release of any awarded funding. To better understand the Trust’s definition of and policy on Letter(s) of Commitment, visit our Forms and Policies webpage: www.cbtrust.org/forms.

Narrative & Supporting Documents Tab: Upload a Microsoft Word or PDF file that contains your answers to the narrative questions found in the Narrative Questions section of this RFP. Upload additional supporting documents, if needed/required.

Budget Tab: Upload your application budget, provide budget category and request totals, and provide additional budget justification. Use the Trust’s Financial Management Spreadsheet and fill out the “Application Budget” worksheet. Refer to the Budget Instructions of this RFP.

Terms and Conditions Tab: Agree to the specified terms and conditions for the program for which you are applying.

Demographics Tab and Survey Tab (optional): Provide voluntary demographic information. Provide information about your organization’s current diversity, equity, inclusion, and justice (DEIJ) efforts and future goals. Additionally, provide voluntary feedback on the application process.