



GREEN STREETS | GREEN JOBS | GREEN TOWNS INITIATIVE

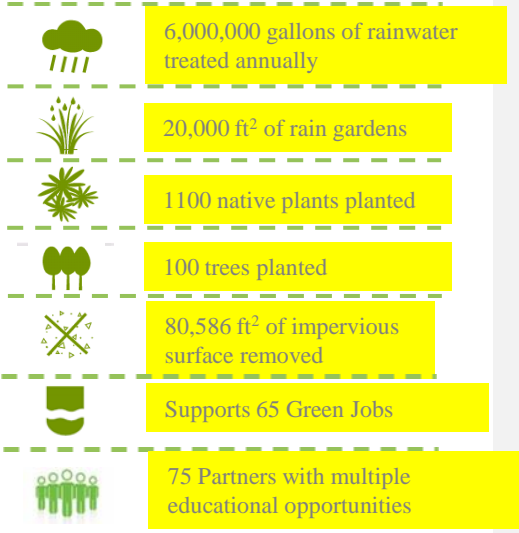
The Green Streets, Green Jobs, Green Towns Partnership (G3) aims to stimulate the green jobs market and enable families to work where they live and play. Small to mid-sized communities can boost their local economies and protect water resources through the use of watershed planning, design and construction of stormwater best management practices.



The Parks & People Foundation: Creating a Green Street Concept for Reisterstown Road

The Parks & People Foundation (PPF) is developing a conceptual design for a “Green Street” for a quarter-mile section of Reisterstown Road to connect the PPF campus, Enterprise Homes housing complex, and the MTA stations at Mondawmin Mall.

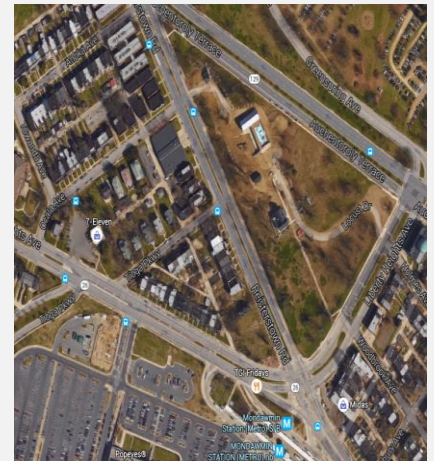
Estimated Project Metrics



The conceptual plan is needed to fully realize development investments that have already been made in Mondawmin i.e. new businesses, bike lanes, the upcoming Enterprise Homes community and PPF’s \$13 million campus— to attract new families and create a more livable community.

Screening Tool, which is based on nationally consistent data, the CSA is in the 99th percentile to major direct water dischargers compared to the entirety of EPA Region 3 – meaning only 1% of the region is in closer proximity to unfiltered waste and stormwater that enters both streams and ground water.

Additionally, while there have been many local investments to-date, no project has “connected the dots” within the community. The conceptual design for this green street is a vital first step toward a holistic, integrated approach that will allow PPF to leverage resources from state and federal sources for implementation of this concept, and ultimately a series of similar “connections” throughout West Baltimore.



The Greater Mondawmin Community Statistical Area (CSA) is also in close proximity to direct water dischargers and high volumes of traffic. According to the EPA’s Environmental Justice



PROJECT ELEMENTS

- **Impervious pavement removal** – Rain hits impervious surfaces such as parking lots and roads, and because it cannot soak through, it instead runs off into storm drains or directly local waterways. The new Salvation Army Harrisburg site contains 5.5 acres of impervious surfaces that drain directly into the adjacent Spring Creek. The unnecessary area of this parking lot will be removed and planted with native vegetation.
- **Native Trees**– In urban areas a single tree can intercept from 500 to 4,000 gallons per year. Trees not only treat stormwater, they provide a host of other benefits, including energy cost reduction in both summer (shade) and winter (proper placement can result in the reduction of energy use by 20-50%), aesthetics, property value enhancement, business traffic enhancement, and health benefits.
- **Conservation Landscaping**– Native plants and shrubs require less maintenance and absorb rainwater, hold soils in place, and provide food and habitat for birds, pollinators, and other wildlife.
- **Rain Gardens**– These features filter and reduce stormwater runoff, allowing it to infiltrate into the ground before it enters into the storm drain system
- **Educational Signage** – Signage will educate visitors about the various stormwater practices and features at the facility.
- **Rainwater Cisterns**- Cisterns will be hooked up to buildings in selected spots to collect and store rainwater for non-potable uses.
- **Green Jobs and Engagement of local businesses** – Local management firms, construction firms, and suppliers were used to complete the project, supporting local jobs. In addition, the site will be used to train young people seeking jobs in the green infrastructure .



SUSTAINABILITY & GROWTH: ADDITIONAL COMMUNITY ENGAGEMENT

PPF has a partnership with both the Mount Lebanon Baptist Church on Reisterstown Road and the Shaarei Tfiloh Congregation. PPF will reach out to both to solicit advice and input by those who will be directly impacted by the project, such as the adjacent Liberty Square Community Organization. Additionally, PPF will outreach to the Parkside Manor housing community beside Mount Lebanon Baptist Church to inform residents of the design process and invite them to information and input sessions. PPF will also ask that the Greater Mondawmin Coordinating Council inform the entire network about the information and input sessions.

| | |
|---------------------|----------|
| G3 Grant Awarded: | \$18,199 |
| Total Project Cost: | \$18,590 |
| Status: | Awarded |

Current site conditions



Project Partners: Mount Lebanon Baptist Church, Enterprise Homes, Chesapeake Bay Trust, U.S. Environmental Protection Agency

For additional information: visit www.epa.gov and www.cbtrust.org.